

## Product datasheet for **TA356509**

### PPP1R3A Rabbit Polyclonal Antibody

#### Product data:

Product Type:	Primary Antibodies
Applications:	WB
Reactivity:	Human
Host:	Rabbit
Clonality:	Polyclonal
Immunogen:	The immunogen is a synthetic peptide directed towards the N terminal region of human PPP1R3A
Specificity:	<b>Expected reactivity:</b> Cow, Dog, Guinea Pig, Horse, Human, Mouse, Pig, Rabbit, Rat <b>Homology:</b> Cow: 93%; Dog: 100%; Guinea Pig: 86%; Horse: 100%; Human: 100%; Mouse: 100%; Pig: 100%; Rabbit: 100%; Rat: 100%
Formulation:	Liquid. Purified antibody supplied in 1x PBS buffer with 0.09% (w/v) sodium azide and 2% sucrose. <i>Note that this product is shipped as lyophilized powder to China customers.</i>
Concentration:	lot specific
Purification:	Affinity Purified
Conjugation:	Unconjugated
Storage:	For short term use, store at 2-8°C up to 1 week. For long term storage, store at -20°C in small aliquots to prevent freeze-thaw cycles.
Stability:	Shelf life: one year from despatch.
Predicted Protein Size:	126kDa
Gene Name:	protein phosphatase 1 regulatory subunit 3A
Database Link:	<a href="#">NP_002702</a> <a href="#">Entrez Gene 5506 Human</a> <a href="#">Q16821</a>
Background:	The glycogen-associated form of protein phosphatase-1 (PP1) derived from skeletal muscle is a heterodimer composed of a 37-kD catalytic subunit and a 124-kD targeting and regulatory subunit. This gene encodes the regulatory subunit which binds to muscle g
Synonyms:	GM; PP1G; PPP1R3

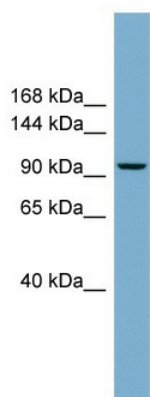


[View online »](#)

Protein Families: Druggable Genome, Phosphatase, Transmembrane

Protein Pathways: Insulin signaling pathway

### Product images:



WB Suggested Anti-PPP1R3A Antibody Titration:  
0.2-1 ug/ml  
Positive Control: THP-1 cell lysate