

## Product datasheet for **TA356506**

### PIGA Rabbit Polyclonal Antibody

#### Product data:

Product Type:	Primary Antibodies
Applications:	WB
Reactivity:	Human
Host:	Rabbit
Clonality:	Polyclonal
Immunogen:	The immunogen is a synthetic peptide directed towards the middle region of human PIGA
Specificity:	<b>Expected reactivity:</b> Cow, Dog, Human, Mouse, Pig, Rabbit, Rat <b>Homology:</b> Cow: 86%; Dog: 93%; Human: 100%; Mouse: 93%; Pig: 79%; Rabbit: 79%; Rat: 93%
Formulation:	Liquid. Purified antibody supplied in 1x PBS buffer with 0.09% (w/v) sodium azide and 2% sucrose. <i>Note that this product is shipped as lyophilized powder to China customers.</i>
Concentration:	lot specific
Purification:	Affinity Purified
Conjugation:	Unconjugated
Storage:	For short term use, store at 2-8°C up to 1 week. For long term storage, store at -20°C in small aliquots to prevent freeze-thaw cycles.
Stability:	Shelf life: one year from despatch.
Predicted Protein Size:	19kDa
Gene Name:	phosphatidylinositol glycan anchor biosynthesis class A
Database Link:	<a href="#">NP_065206</a> <a href="#">Entrez Gene 5277 Human</a> <a href="#">B3KUV7</a>



[View online »](#)

**Background:**

PIGA is a protein required for synthesis of N-acetylglucosaminyl phosphatidylinositol (GlcNAc-PI), the first intermediate in the biosynthetic pathway of GPI anchor. The GPI anchor is a glycolipid found on many blood cells and which serves to anchor proteins to the cell surface. Paroxysmal nocturnal hemoglobinuria, an acquired hematologic disorder, has been shown to result from mutations in this gene. This gene encodes a protein required for synthesis of N-acetylglucosaminyl phosphatidylinositol (GlcNAc-PI), the first intermediate in the biosynthetic pathway of GPI anchor. The GPI anchor is a glycolipid found on many blood cells and which serves to anchor proteins to the cell surface. Paroxysmal nocturnal hemoglobinuria, an acquired hematologic disorder, has been shown to result from mutations in this gene. Alternate splice variants have been characterized.

**Synonyms:**

GPI3; PIG-A

**Protein Families:**

Transmembrane

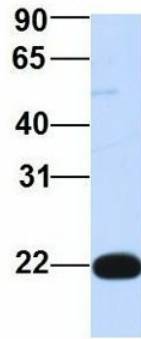
**Protein Pathways:**

Glycosylphosphatidylinositol(GPI)-anchor biosynthesis, Metabolic pathways

**Product images:**

WB Suggested Anti-PIGA Antibody Titration: 0.2-1 ug/ml  
ELISA Titer: 1:312500  
Positive Control: Human Placenta

## PIGA



Rabbit Anti-PIGA  
Sample Type: Human 293T  
Antibody Concentration: 1ug/mL

Host: Rabbit  
Target Name: PIGA  
Sample Type: Human 293T  
Antibody Dilution: 1.0ug/mlPIGA is supported by  
BioGPS gene expression data to be expressed in  
HEK293T