

## Product datasheet for **TA356505**

### PCDH8 Rabbit Polyclonal Antibody

#### Product data:

Product Type:	Primary Antibodies
Applications:	WB
Reactivity:	Human
Host:	Rabbit
Clonality:	Polyclonal
Immunogen:	The immunogen is a synthetic peptide directed towards the middle region of human PCDH8
Specificity:	<b>Expected reactivity:</b> Dog, Guinea Pig, Horse, Human, Rabbit <b>Homology:</b> Dog: 92%; Guinea Pig: 92%; Horse: 86%; Human: 100%; Rabbit: 92%
Formulation:	Liquid. Purified antibody supplied in 1x PBS buffer with 0.09% (w/v) sodium azide and 2% sucrose. <i>Note that this product is shipped as lyophilized powder to China customers.</i>
Concentration:	lot specific
Purification:	Affinity Purified
Conjugation:	Unconjugated
Storage:	For short term use, store at 2-8°C up to 1 week. For long term storage, store at -20°C in small aliquots to prevent freeze-thaw cycles.
Stability:	Shelf life: one year from despatch.
Predicted Protein Size:	101kDa
Gene Name:	protocadherin 8
Database Link:	<a href="#">NP_116567</a> <a href="#">Entrez Gene 5100 Human</a> <a href="#">O95206</a>



[View online »](#)

**Background:**

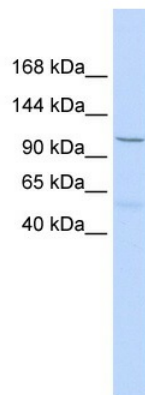
This gene belongs to the protocadherin gene family, a subfamily of the cadherin superfamily. PCDH8 is an integral membrane protein that is thought to function in cell adhesion in a CNS-specific manner. Unlike classical cadherins, which are generally encoded by 15-17 exons, this gene includes only 3 exons. Notable is the large first exon encoding the extracellular region, including 6 cadherin domains and a transmembrane region. This gene belongs to the protocadherin gene family, a subfamily of the cadherin superfamily. The gene encodes an integral membrane protein that is thought to function in cell adhesion in a CNS-specific manner. Unlike classical cadherins, which are generally encoded by 15-17 exons, this gene includes only 3 exons. Notable is the large first exon encoding the extracellular region, including 6 cadherin domains and a transmembrane region. Alternative splicing yields isoforms with unique cytoplasmic tails.

**Synonyms:**

ARCADLIN; PAPC

**Protein Families:**

Transmembrane

**Product images:**

WB Suggested Anti-PCDH8 Antibody Titration:  
0.2-1 ug/ml  
ELISA Titer: 1:312500  
Positive Control: Human Liver