

Product datasheet for **TA356499**

PCDHGC3 Rabbit Polyclonal Antibody

Product data:

Product Type:	Primary Antibodies
Applications:	WB
Reactivity:	Human
Host:	Rabbit
Clonality:	Polyclonal
Immunogen:	The immunogen is a synthetic peptide directed towards the C terminal region of human PCDHGC3
Specificity:	Expected reactivity: Cow, Guinea Pig, Horse, Human, Mouse, Rat Homology: Cow: 92%; Guinea Pig: 85%; Horse: 100%; Human: 100%; Mouse: 100%; Rat: 100%
Formulation:	Liquid. Purified antibody supplied in 1x PBS buffer with 0.09% (w/v) sodium azide and 2% sucrose. <i>Note that this product is shipped as lyophilized powder to China customers.</i>
Concentration:	lot specific
Purification:	Affinity Purified
Conjugation:	Unconjugated
Storage:	For short term use, store at 2-8°C up to 1 week. For long term storage, store at -20°C in small aliquots to prevent freeze-thaw cycles.
Stability:	Shelf life: one year from despatch.
Predicted Protein Size:	98kDa
Gene Name:	protocadherin gamma subfamily C, 3
Database Link:	NP_002579 Entrez Gene 5098 Human Q9UN70



[View online »](#)

Background:

This gene is a member of the protocadherin gamma gene cluster, one of three related clusters tandemly linked on chromosome five. These gene clusters have an immunoglobulin-like organization, suggesting that a novel mechanism may be involved in their regulation and expression. PCDHGC3 is a potential calcium-dependent cell-adhesion protein. It may be involved in the establishment and maintenance of specific neuronal connections in the brain. This gene is a member of the protocadherin gamma gene cluster, one of three related clusters tandemly linked on chromosome five. These gene clusters have an immunoglobulin-like organization, suggesting that a novel mechanism may be involved in their regulation and expression. The gamma gene cluster includes 22 genes divided into 3 subfamilies. Subfamily A contains 12 genes, subfamily B contains 7 genes and 2 pseudogenes, and the more distantly related subfamily C contains 3 genes. The tandem array of 22 large, variable region exons are followed by a constant region, containing 3 exons shared by all genes in the cluster. Each variable region exon encodes the extracellular region, which includes 6 cadherin ectodomains and a transmembrane region. The constant region exons encode the common cytoplasmic region. These neural cadherin-like cell adhesion proteins most likely play a critical role in the establishment and function of specific cell-cell connections in the brain. Alternative splicing has been described for the gamma cluster genes.

Synonyms:

PC-43; PC43; PCDH-GAMMA-C3; PCDH2; Protocadherin-2; Protocadherin-43

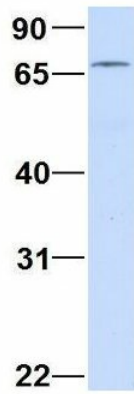
Protein Families:

Transmembrane

Product images:

WB Suggested Anti-PCDHGC3 Antibody Titration:
0.2-1 ug/ml
ELISA Titer: 1:312500
Positive Control: 721_B cell lysate
There is BioGPS gene expression data showing that PCDHGC3 is expressed in 721_B

PCDHGC3



Rabbit Anti-PCDHGC3
Sample Type: Human Adult Placenta
Antibody Concentration: 1ug/mL

Host: Rabbit
Target Name: CHAD
Sample Type: Human Adult Placenta
Antibody Dilution: 1.0ug/ml

PCDHGC3



Rabbit Anti-PCDHGC3
Sample Type: Human 293T
Antibody Concentration: 1ug/mL

Host: Rabbit
Target Name: PCDHGC3
Sample Type: 293T
Antibody Dilution: 1.0ug/ml