

## Product datasheet for **TA356495**

### FURIN Rabbit Polyclonal Antibody

#### Product data:

Product Type:	Primary Antibodies
Applications:	WB
Reactivity:	Human, Mouse
Host:	Rabbit
Clonality:	Polyclonal
Immunogen:	The immunogen is a synthetic peptide directed towards the N terminal region of human FURIN
Specificity:	<b>Expected reactivity:</b> Cow, Dog, Guinea Pig, Horse, Human, Mouse, Rabbit, Rat, Sheep, Zebrafish <b>Homology:</b> Cow: 93%; Dog: 100%; Guinea Pig: 100%; Horse: 100%; Human: 100%; Mouse: 100%; Rabbit: 100%; Rat: 100%; Sheep: 93%; Zebrafish: 86%
Formulation:	Liquid. Purified antibody supplied in 1x PBS buffer with 0.09% (w/v) sodium azide and 2% sucrose. <i>Note that this product is shipped as lyophilized powder to China customers.</i>
Concentration:	lot specific
Purification:	Affinity Purified
Conjugation:	Unconjugated
Storage:	For short term use, store at 2-8°C up to 1 week. For long term storage, store at -20°C in small aliquots to prevent freeze-thaw cycles.
Stability:	Shelf life: one year from despatch.
Predicted Protein Size:	74kDa
Gene Name:	furin, paired basic amino acid cleaving enzyme
Database Link:	<a href="#">NP_002560</a> <a href="#">Entrez Gene 18550 Mouse</a> <a href="#">Entrez Gene 5045 Human</a> <a href="#">P09958</a>
Background:	The protein encoded by this gene belongs to the subtilisin-like proprotein convertase family. The members of this family are proprotein convertases that process latent precursor proteins into their biologically active products. This encoded protein is a c

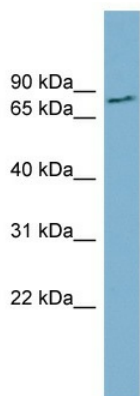


[View online »](#)

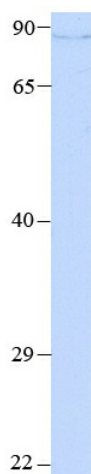
**Synonyms:** FUR; PACE; PCSK3; SPC1

**Protein Families:** Druggable Genome, Protease, Transmembrane

**Product images:**



WB Suggested Anti-FURIN Antibody Titration: 0.2-1 ug/ml  
 ELISA Titer: 1:62500  
 Positive Control: THP-1 cell lysate



Host: Rabbit  
 Target Name: FURIN  
 Sample Type: 293T  
 Antibody Dilution: 1ug/ml

Host: Rabbit  
 Target Name: FURIN  
 Sample Type: 293T cell lysate  
 Antibody Dilution: 1.0ug/ml



Host: Rabbit  
Target Name: Furin  
Sample Type: Mouse Testis Lysate  
Antibody Dilution: 1.0µg/ml

Host: Rabbit  
Target Name: FURIN  
Sample Tissue: Mouse Testis  
Antibody Dilution: 1ug/ml



Host: Rabbit  
Target Name: Furin  
Sample Type: Mouse Testis Lysate  
Antibody Dilution: 1.0µg/ml

Host: Mouse  
Target Name: FURIN  
Sample Tissue: Mouse Testis  
Antibody Dilution: 1ug/ml