

## Product datasheet for **TA356494**

### Oligodendrocyte myelin glycoprotein (OMG) Rabbit Polyclonal Antibody

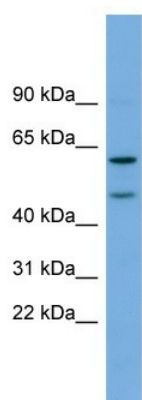
#### Product data:

Product Type:	Primary Antibodies
Applications:	WB
Reactivity:	Human
Host:	Rabbit
Clonality:	Polyclonal
Immunogen:	The immunogen is a synthetic peptide directed towards the middle region of human OMG
Specificity:	<b>Expected reactivity:</b> Cow, Dog, Goat, Guinea Pig, Horse, Human, Mouse, Rabbit, Rat, Yeast <b>Homology:</b> Cow: 93%; Dog: 100%; Goat: 83%; Guinea Pig: 100%; Horse: 100%; Human: 100%; Mouse: 100%; Rabbit: 79%; Rat: 100%; Yeast: 75%
Formulation:	Liquid. Purified antibody supplied in 1x PBS buffer with 0.09% (w/v) sodium azide and 2% sucrose. <i>Note that this product is shipped as lyophilized powder to China customers.</i>
Concentration:	lot specific
Purification:	Affinity Purified
Conjugation:	Unconjugated
Storage:	For short term use, store at 2-8°C up to 1 week. For long term storage, store at -20°C in small aliquots to prevent freeze-thaw cycles.
Stability:	Shelf life: one year from despatch.
Predicted Protein Size:	49kDa
Gene Name:	oligodendrocyte myelin glycoprotein
Database Link:	<a href="#">NP_002535</a> <a href="#">Entrez Gene 4974 Human</a> <a href="#">P23515</a>
Background:	OMG is a cell adhesion molecule contributing to the interactive process required for myelination in the central nervous system.
Synonyms:	OMGP
Protein Families:	Druggable Genome, Transmembrane



[View online »](#)

## Product images:



WB Suggested Anti-OMG Antibody Titration: 0.2-1 ug/ml  
ELISA Titer: 1:62500  
Positive Control: PANC1 cell lysate