

Product datasheet for TA356492

Oligodendrocyte myelin glycoprotein (OMG) Rabbit Polyclonal Antibody

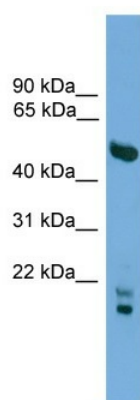
Product data:

Product Type:	Primary Antibodies
Applications:	WB
Reactivity:	Human
Host:	Rabbit
Clonality:	Polyclonal
Immunogen:	The immunogen is a synthetic peptide directed towards the N terminal region of human OMG
Specificity:	Expected reactivity: Cow, Dog, Guinea Pig, Horse, Human, Mouse, Rabbit, Rat Homology: Cow: 93%; Dog: 100%; Guinea Pig: 100%; Horse: 100%; Human: 100%; Mouse: 100%; Rabbit: 100%; Rat: 100%
Formulation:	Liquid. Purified antibody supplied in 1x PBS buffer with 0.09% (w/v) sodium azide and 2% sucrose. <i>Note that this product is shipped as lyophilized powder to China customers.</i>
Concentration:	lot specific
Purification:	Affinity Purified
Conjugation:	Unconjugated
Storage:	For short term use, store at 2-8°C up to 1 week. For long term storage, store at -20°C in small aliquots to prevent freeze-thaw cycles.
Stability:	Shelf life: one year from despatch.
Predicted Protein Size:	49kDa
Gene Name:	oligodendrocyte myelin glycoprotein
Database Link:	NP_002535 Entrez Gene 4974 Human P23515
Background:	OMG is a cell adhesion molecule contributing to the interactive process required for myelination in the central nervous system.
Synonyms:	OMGP
Protein Families:	Druggable Genome, Transmembrane



[View online »](#)

Product images:



WB Suggested Anti-OMG Antibody Titration: 0.2-1 ug/ml
Positive Control: HepG2 cell lysate
OMG is supported by BioGPS gene expression data to be expressed in HepG2