

## Product datasheet for **TA356489**

### LRPAP1 Rabbit Polyclonal Antibody

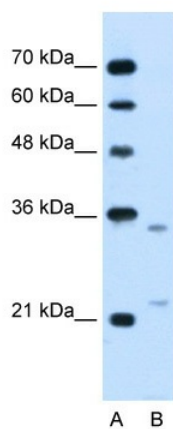
#### Product data:

Product Type:	Primary Antibodies
Applications:	IHC, WB
Reactivity:	Human
Host:	Rabbit
Clonality:	Polyclonal
Immunogen:	The immunogen is a synthetic peptide directed towards the C terminal region of human LRPAP1
Specificity:	<b>Expected reactivity:</b> Cow, Dog, Guinea Pig, Horse, Human, Mouse, Rat <b>Homology:</b> Cow: 93%; Dog: 100%; Guinea Pig: 100%; Horse: 100%; Human: 100%; Mouse: 100%; Rat: 100%
Formulation:	Liquid. Purified antibody supplied in 1x PBS buffer with 0.09% (w/v) sodium azide and 2% sucrose. <i>Note that this product is shipped as lyophilized powder to China customers.</i>
Concentration:	lot specific
Purification:	Protein A purified
Conjugation:	Unconjugated
Storage:	For short term use, store at 2-8°C up to 1 week. For long term storage, store at -20°C in small aliquots to prevent freeze-thaw cycles.
Stability:	Shelf life: one year from despatch.
Predicted Protein Size:	39kDa
Gene Name:	LDL receptor related protein associated protein 1
Database Link:	<a href="#">NP_002328</a> <a href="#">Entrez Gene 4043 Human</a> <a href="#">P30533</a>
Background:	LRPAP1 interacts with LRP1/alpha-2-macroglobulin receptor and glycoprotein 330.
Synonyms:	A2MRAP; A2RAP; alpha-2-MRAP; HBP44; MGC138272; MRAP; RAP
Protein Families:	Druggable Genome, Transmembrane

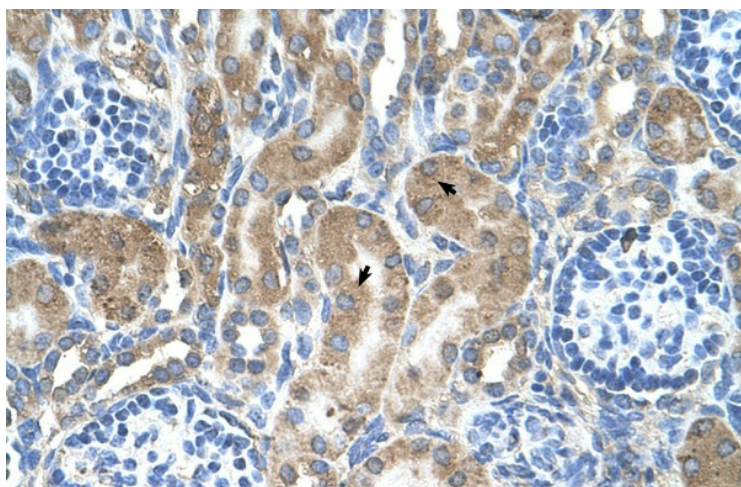


[View online »](#)

## Product images:



WB Suggested Anti-LRPAP1 Antibody Titration:  
2.5ug/ml  
Positive Control: Jurkat cell lysate



Human kidney