

## Product datasheet for **TA356485**

### LTB Rabbit Polyclonal Antibody

#### Product data:

Product Type:	Primary Antibodies
Applications:	WB
Reactivity:	Human
Host:	Rabbit
Clonality:	Polyclonal
Immunogen:	The immunogen is a synthetic peptide directed towards the N terminal region of human LTB
Specificity:	<b>Expected reactivity:</b> Guinea Pig, Horse, Human, Rabbit <b>Homology:</b> Guinea Pig: 79%; Horse: 91%; Human: 100%; Rabbit: 100%
Formulation:	Liquid. Purified antibody supplied in 1x PBS buffer with 0.09% (w/v) sodium azide and 2% sucrose. <i>Note that this product is shipped as lyophilized powder to China customers.</i>
Concentration:	lot specific
Purification:	Affinity Purified
Conjugation:	Unconjugated
Storage:	For short term use, store at 2-8°C up to 1 week. For long term storage, store at -20°C in small aliquots to prevent freeze-thaw cycles.
Stability:	Shelf life: one year from despatch.
Predicted Protein Size:	25kDa
Gene Name:	lymphotoxin beta
Database Link:	<a href="#">NP_002332</a> <a href="#">Entrez Gene 4050 Human</a> <a href="#">Q06643</a>



[View online »](#)

**Background:**

Lymphotoxin beta is a type II membrane protein of the TNF family. It anchors lymphotoxin-alpha to the cell surface through heterotrimer formation. The predominant form on the lymphocyte surface is the lymphotoxin-alpha 1/beta 2 complex (e.g. 1 molecule alpha/2 molecules beta) and this complex is the primary ligand for the lymphotoxin-beta receptor. The minor complex is lymphotoxin-alpha 2/beta 1. LTB is an inducer of the inflammatory response system and involved in normal development of lymphoid tissue. Lymphotoxin-beta isoform b is unable to complex with lymphotoxin-alpha suggesting a function for lymphotoxin-beta which is independent of lymphotoxin-alpha. Alternative splicing results in multiple transcript variants encoding different isoforms.

**Synonyms:**

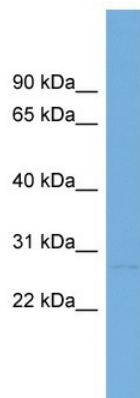
LT-beta; lymphotoxin-beta; p33; TNF-C; TNFC; TNFSF3

**Protein Families:**

Druggable Genome, Transmembrane

**Protein Pathways:**

Cytokine-cytokine receptor interaction

**Product images:**

WB Suggested Anti-LTB Antibody Titration: 0.2-1 ug/ml  
Positive Control: Human Thymus