

## Product datasheet for **TA356483**

### Lamin B Receptor (LBR) Rabbit Polyclonal Antibody

#### Product data:

Product Type:	Primary Antibodies
Applications:	IP, WB
Reactivity:	Human
Host:	Rabbit
Clonality:	Polyclonal
Immunogen:	The immunogen is a synthetic peptide directed towards the middle region of human LBR
Specificity:	<b>Expected reactivity:</b> Cow, Dog, Guinea Pig, Horse, Human, Mouse, Pig, Rabbit, Rat, Yeast, Zebrafish <b>Homology:</b> Cow: 86%; Dog: 93%; Guinea Pig: 86%; Horse: 93%; Human: 100%; Mouse: 93%; Pig: 93%; Rabbit: 93%; Rat: 100%; Yeast: 77%; Zebrafish: 79%
Formulation:	Liquid. Purified antibody supplied in 1x PBS buffer with 0.09% (w/v) sodium azide and 2% sucrose. <i>Note that this product is shipped as lyophilized powder to China customers.</i>
Concentration:	lot specific
Purification:	Affinity Purified
Conjugation:	Unconjugated
Storage:	For short term use, store at 2-8°C up to 1 week. For long term storage, store at -20°C in small aliquots to prevent freeze-thaw cycles.
Stability:	Shelf life: one year from despatch.
Predicted Protein Size:	71kDa
Gene Name:	lamin B receptor
Database Link:	<a href="#">NP_002287</a> <a href="#">Entrez Gene 3930 Human</a> <a href="#">Q14739</a>



[View online »](#)

**Background:**

The protein encoded by this gene belongs to the ERG4/ERG24 family. It localized in the nuclear envelope inner membrane and anchors the lamina and the heterochromatin to the membrane. It may mediate interaction between chromatin and lamin B. Mutations of this gene has been associated with autosomal recessive HEM/Greenberg skeletal dysplasia. Alternative splicing occurs at this locus and two transcript variants encoding the same protein have been identified.

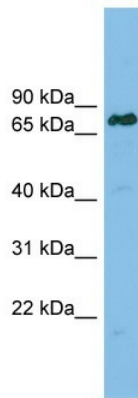
**Synonyms:**

DHCR14B; FLJ43126; LMN2R; MGC9041; PHA

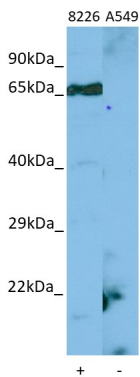
**Protein Families:**

Druggable Genome, Transmembrane

**Product images:**

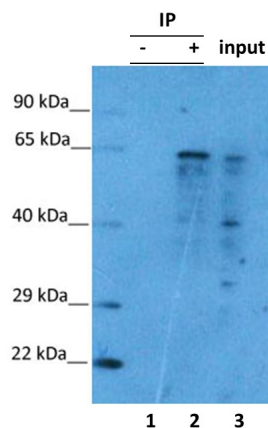


WB Suggested Anti-LBR Antibody Titration: 0.2-1 ug/ml  
 ELISA Titer: 1:1562500  
 Positive Control: RPMI 8226 cell lysate LBR is supported by BioGPS gene expression data to be expressed in RPMI 8226



Host: Rabbit  
 Target name: LBR  
 Positive control: ~25ug RPMI-8226 Cell Lysate (8226)  
 Negative control: ~25ug A549 Cell Lysate (A549)  
 Antibody concentration: 1ug/ml

Host: Rabbit  
 Target: LBR  
 Positive control (+): RPMI-8226 (N12)  
 Negative control (-): A549 (N03)  
 Antibody concentration: 1ug/ml



Lysate: HEK293 2mg  
 IP: LBR 2ug  
 Detection: LBR 3ug/ml

LBR was immunoprecipitated from 2 mg HEK293 Whole Cell Lysate with TA356483 with 1:200 dilution. Western blot was performed using TA356483 at 1/1000 dilution.  
 Lane 1: Control IP in HEK293 Whole Cell Lysate.  
 Lane 2: LBR IP with TA356483 in HEK293 Whole Cell Lysate.  
 Lane 3: Input of HEK293 Whole Cell Lysate.