

Product datasheet for TA356482

LSAMP Rabbit Polyclonal Antibody

Product data:

Product Type:	Primary Antibodies
Applications:	WB
Reactivity:	Human
Host:	Rabbit
Clonality:	Polyclonal
Immunogen:	The immunogen is a synthetic peptide directed towards the N terminal region of human LSAMP
Specificity:	Expected reactivity: Cow, Guinea Pig, Horse, Human, Mouse, Rat Homology: Cow: 100%; Guinea Pig: 100%; Horse: 100%; Human: 100%; Mouse: 100%; Rat: 100%
Formulation:	Liquid. Purified antibody supplied in 1x PBS buffer with 0.09% (w/v) sodium azide and 2% sucrose. <i>Note that this product is shipped as lyophilized powder to China customers.</i>
Concentration:	lot specific
Purification:	Affinity Purified
Conjugation:	Unconjugated
Storage:	For short term use, store at 2-8°C up to 1 week. For long term storage, store at -20°C in small aliquots to prevent freeze-thaw cycles.
Stability:	Shelf life: one year from despatch.
Predicted Protein Size:	37kDa
Gene Name:	limbic system-associated membrane protein
Database Link:	NP_002329 Entrez Gene 4045 Human Q13449



[View online »](#)

Background:

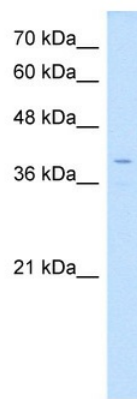
LSAMP is a neuronal surface glycoprotein found in cortical and subcortical regions of the limbic system. During development of the limbic system, this protein is found on the surface of axonal membranes and growth cones, where it acts as a selective homophilic adhesion molecule, and guides the development of specific patterns of neuronal connections. The protein encoded by this gene is a neuronal surface glycoprotein found in cortical and subcortical regions of the limbic system. During development of the limbic system, this encoded protein is found on the surface of axonal membranes and growth cones, where it acts as a selective homophilic adhesion molecule, and guides the development of specific patterns of neuronal connections.

Synonyms:

FLJ34254; FLJ35396; FLJ37216; FLJ54658; IGLON3; LAMP

Protein Families:

Transmembrane

Product images:


WB Suggested Anti-LSAMP Antibody Titration:
0.2-1 ug/ml
Positive Control: HepG2 cell lysate