

Product datasheet for **TA356480**

KLRC3 Rabbit Polyclonal Antibody

Product data:

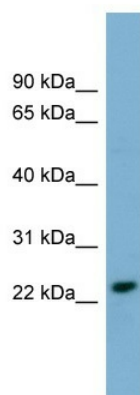
Product Type:	Primary Antibodies
Applications:	WB
Reactivity:	Human
Host:	Rabbit
Clonality:	Polyclonal
Immunogen:	The immunogen is a synthetic peptide directed towards the N terminal region of human KLRC3
Specificity:	Expected reactivity: Human, Mouse Homology: Human: 100%; Mouse: 79%
Formulation:	Liquid. Purified antibody supplied in 1x PBS buffer with 0.09% (w/v) sodium azide and 2% sucrose. <i>Note that this product is shipped as lyophilized powder to China customers.</i>
Concentration:	lot specific
Purification:	Affinity Purified
Conjugation:	Unconjugated
Storage:	For short term use, store at 2-8°C up to 1 week. For long term storage, store at -20°C in small aliquots to prevent freeze-thaw cycles.
Stability:	Shelf life: one year from despatch.
Predicted Protein Size:	27kDa
Gene Name:	killer cell lectin like receptor C3
Database Link:	NP_002252 Entrez Gene 3823 Human Q07444
Background:	Natural killer (NK) cells are lymphocytes that can mediate lysis of certain tumor cells and virus-infected cells without previous activation. They can also regulate specific humoral and cell-mediated immunity. NK cells preferentially express several calci
Synonyms:	NKG2-E; NKG2E
Protein Families:	Transmembrane



[View online »](#)

Protein Pathways: Antigen processing and presentation, Natural killer cell mediated cytotoxicity

Product images:



WB Suggested Anti-KLRC3 Antibody Titration: 0.2-1 ug/ml
Positive Control: OVCAR-3 cell lysate