

Product datasheet for **TA356478**

Jagged 2 (JAG2) Rabbit Polyclonal Antibody

Product data:

Product Type:	Primary Antibodies
Applications:	IHC, WB
Reactivity:	Human
Host:	Rabbit
Clonality:	Polyclonal
Immunogen:	The immunogen is a synthetic peptide directed towards the N terminal region of human JAG2
Specificity:	Expected reactivity: Human, Mouse, Pig, Rat Homology: Human: 100%; Mouse: 100%; Pig: 100%; Rat: 100%
Formulation:	Liquid. Purified antibody supplied in 1x PBS buffer with 0.09% (w/v) sodium azide and 2% sucrose. <i>Note that this product is shipped as lyophilized powder to China customers.</i>
Concentration:	lot specific
Purification:	Affinity Purified
Conjugation:	Unconjugated
Storage:	For short term use, store at 2-8°C up to 1 week. For long term storage, store at -20°C in small aliquots to prevent freeze-thaw cycles.
Stability:	Shelf life: one year from despatch.
Predicted Protein Size:	130kDa
Gene Name:	jagged 2
Database Link:	NP_002217 Entrez Gene 3714 Human Q9Y219



[View online »](#)

Background:

The Notch signaling pathway is an intercellular signaling mechanism that is essential for proper embryonic development. Members of the Notch protein family are transmembrane receptors that are critical for various cell fate decisions. JAG2 is one of several ligands that activate Notch and related receptors. The Notch signaling pathway is an intercellular signaling mechanism that is essential for proper embryonic development. Members of the Notch gene family encode transmembrane receptors that are critical for various cell fate decisions. The protein encoded by this gene is one of several ligands that activate Notch and related receptors. Two transcript variants encoding different isoforms have been found for this gene.

Synonyms:

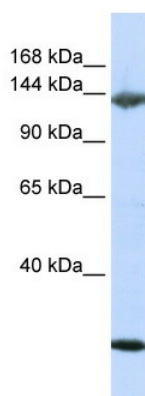
HJ2; Jagged2; SER2

Protein Families:

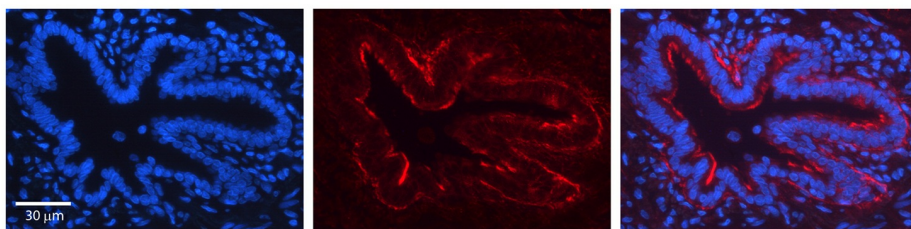
Druggable Genome, Transmembrane

Protein Pathways:

Notch signaling pathway

Product images:


WB Suggested Anti-JAG2 Antibody Titration: 0.2-1 ug/ml
 ELISA Titer: 1:62500
 Positive Control: Jurkat cell lysate



JAG2 antibody - N-terminal region (TA356478)
 Catalog Number: TA356478
 Formalin Fixed Paraffin Embedded Tissue:
 Human Bronchial Epithelial Tissue
 Observed Staining: Membrane of bronchial epithelial tissue
 Primary Antibody Concentration: 1:100
 Secondary Antibody: Donkey anti-Rabbit-Cy3
 Secondary Antibody Concentration: 1:200
 Magnification: 20X
 Exposure Time: 0.5–2.0 sec