

## Product datasheet for **TA356477**

### IHH Rabbit Polyclonal Antibody

#### Product data:

Product Type:	Primary Antibodies
Applications:	IHC, WB
Reactivity:	Human, Mouse
Host:	Rabbit
Clonality:	Polyclonal
Immunogen:	The immunogen is a synthetic peptide directed towards the N terminal region of human IHH
Specificity:	<b>Expected reactivity:</b> Cow, Dog, Goat, Guinea Pig, Horse, Human, Mouse, Rabbit, Rat, Zebrafish <b>Homology:</b> Cow: 86%; Dog: 86%; Goat: 86%; Guinea Pig: 100%; Horse: 86%; Human: 100%; Mouse: 100%; Rabbit: 100%; Rat: 100%; Zebrafish: 93%
Formulation:	Liquid. Purified antibody supplied in 1x PBS buffer with 0.09% (w/v) sodium azide and 2% sucrose. <i>Note that this product is shipped as lyophilized powder to China customers.</i>
Concentration:	lot specific
Purification:	Protein A purified
Conjugation:	Unconjugated
Storage:	For short term use, store at 2-8°C up to 1 week. For long term storage, store at -20°C in small aliquots to prevent freeze-thaw cycles.
Stability:	Shelf life: one year from despatch.
Predicted Protein Size:	45kDa
Gene Name:	indian hedgehog
Database Link:	<a href="#">NP_002172</a> <a href="#">Entrez Gene 16147 Mouse</a> <a href="#">Entrez Gene 3549 Human</a> <a href="#">Q14623</a>



[View online »](#)

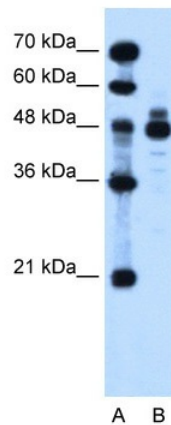
**Background:** IHH is an intercellular signal essential for a variety of patterning events during development. It binds to the patched (PTC) receptor, which functions in association with smoothed (SMO), to activate the transcription of target genes. It is implicated in endochondral ossification: may regulate the balance between growth and ossification of the developing bones and induces the expression of parathyroid hormone-related protein (PTHrP).

**Synonyms:** BDA1; HHG-2; HHG2

**Protein Families:** Druggable Genome, ES Cell Differentiation/IPS, Protease, Transmembrane

**Protein Pathways:** Hedgehog signaling pathway

**Product images:**

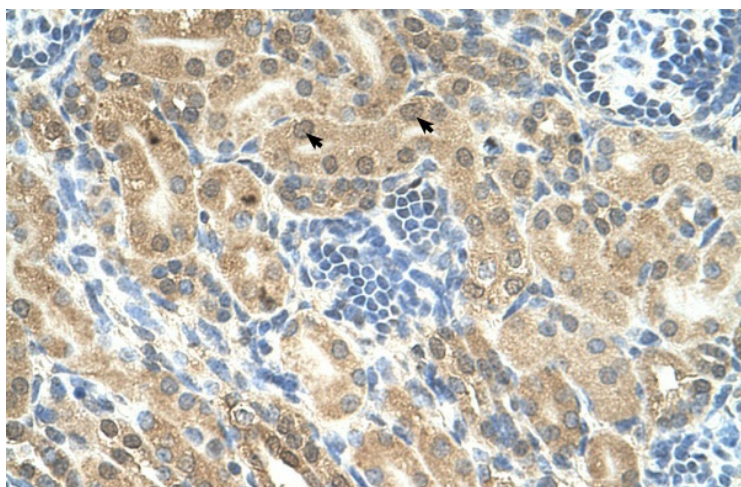


WB Suggested Anti-IHH Antibody Titration:  
1.25ug/ml  
Positive Control: HepG2 cell lysate



Host: Rabbit  
Target Name: Ihh  
Sample Type: Mouse Heart Lysate  
Antibody Dilution: 1.0µg/ml

Host: Mouse  
Target Name: IHH  
Sample Tissue: Mouse Heart  
Antibody Dilution: 1 ug/ml



Human kidney