

## Product datasheet for **TA356474**

### Heme Oxygenase 1 (HMOX1) Rabbit Polyclonal Antibody

#### Product data:

Product Type:	Primary Antibodies
Applications:	WB
Reactivity:	Human, Mouse
Host:	Rabbit
Clonality:	Polyclonal
Immunogen:	The immunogen is a synthetic peptide directed towards the N-terminal region of Human HMOX1
Specificity:	<b>Expected reactivity:</b> Cow, Dog, Goat, Guinea Pig, Human, Mouse, Pig, Rabbit, Rat <b>Homology:</b> Cow: 100%; Dog: 100%; Goat: 100%; Guinea Pig: 93%; Human: 100%; Mouse: 100%; Pig: 100%; Rabbit: 100%; Rat: 100%
Formulation:	Liquid. Purified antibody supplied in 1x PBS buffer with 0.09% (w/v) sodium azide and 2% sucrose. <i>Note that this product is shipped as lyophilized powder to China customers.</i>
Concentration:	lot specific
Purification:	Affinity Purified
Conjugation:	Unconjugated
Storage:	For short term use, store at 2-8°C up to 1 week. For long term storage, store at -20°C in small aliquots to prevent freeze-thaw cycles.
Stability:	Shelf life: one year from despatch.
Predicted Protein Size:	33kDa
Gene Name:	heme oxygenase 1
Database Link:	<a href="#">NP_002124</a> <a href="#">Entrez Gene 15368 Mouse</a> <a href="#">Entrez Gene 3162 Human</a> <a href="#">P09601</a>



[View online »](#)

**Background:**

HMOX1 belongs to the heme oxygenase family. Heme oxygenase, an essential enzyme in heme catabolism, cleaves heme to form biliverdin, which is subsequently converted to bilirubin by biliverdin reductase, and carbon monoxide, a putative neurotransmitter. Heme oxygenase activity is induced by its substrate heme and by various nonheme substances. Heme oxygenase occurs as 2 isozymes, an inducible heme oxygenase-1 and a constitutive heme oxygenase-2.

**Synonyms:**

bK286B10; HO; HO-1; HO1; HSP32

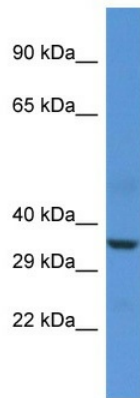
**Protein Families:**

Druggable Genome, Transmembrane

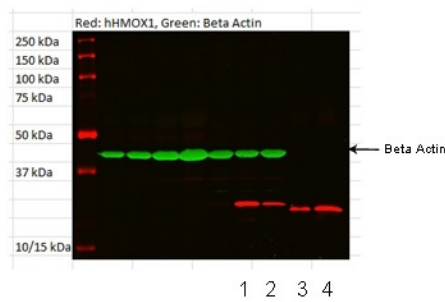
**Protein Pathways:**

Porphyrin and chlorophyll metabolism

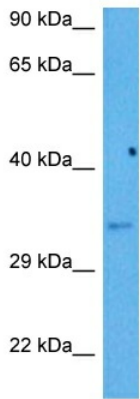
**Product images:**



Host: Rabbit  
 Target Name: HMOX1  
 Sample Type: Jurkat Whole Cell lysates  
 Antibody Dilution: 1.0ug/ml

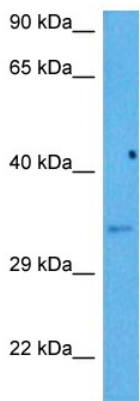


HMOX1 antibody - N-terminal region (TA356474) validated by WB using tonsil and fibroblast at 1:1000.



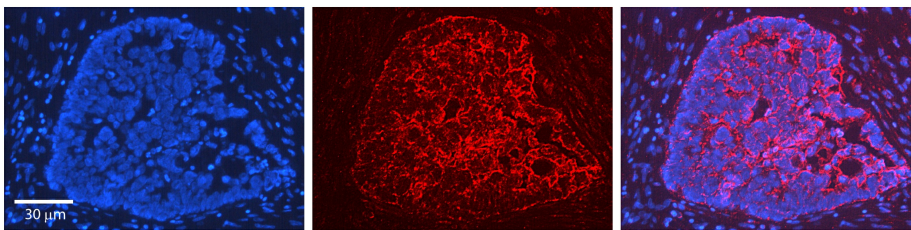
Host: Rabbit  
 Target Name: Hmox1  
 Sample Type: Mouse Spleen Lysate  
 Antibody Dilution: 1.0µg/ml

Host: Rabbit  
 Target Name: HMOX1  
 Sample Tissue: Mouse Spleen  
 Antibody Dilution: 1ug/ml



Host: Rabbit  
 Target Name: Hmox1  
 Sample Type: Mouse Spleen Lysate  
 Antibody Dilution: 1.0µg/ml

Host: Mouse  
 Target Name: HMOX1  
 Sample Tissue: Mouse Spleen  
 Antibody Dilution: 1ug/ml



Rabbit Anti-HMOX1 Antibody  
 Catalog Number: TA356474  
 Formalin Fixed Paraffin Embedded Tissue:  
 Human Ovary Tissue  
 Observed Staining: Cytoplasm  
 Primary Antibody Concentration: 1:100  
 Other Working Concentrations: 1:600  
 Secondary Antibody: Donkey anti-Rabbit-Cy3  
 Secondary Antibody Concentration: 1:200  
 Magnification: 20X  
 Exposure Time: 0.5–2.0 sec