

## Product datasheet for **TA356461**

### Dsg2 Rabbit Polyclonal Antibody

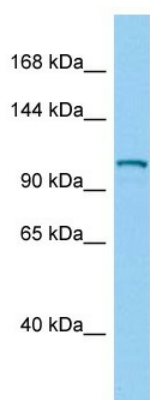
#### Product data:

Product Type:	Primary Antibodies
Applications:	WB
Reactivity:	Mouse
Host:	Rabbit
Clonality:	Polyclonal
Immunogen:	The immunogen is a synthetic peptide directed towards the middle region of Mouse Dsg2
Specificity:	<b>Expected reactivity:</b> Cow, Dog, Guinea Pig, Horse, Human, Mouse, Rabbit, Rat <b>Homology:</b> Cow: 93%; Dog: 92%; Guinea Pig: 100%; Horse: 92%; Human: 100%; Mouse: 93%; Rabbit: 85%; Rat: 100%
Formulation:	Liquid. Purified antibody supplied in 1x PBS buffer with 0.09% (w/v) sodium azide and 2% sucrose.
Concentration:	lot specific
Purification:	Affinity Purified
Conjugation:	Unconjugated
Storage:	For short term use, store at 2-8°C up to 1 week. For long term storage, store at -20°C in small aliquots to prevent freeze-thaw cycles.
Stability:	Shelf life: one year from despatch.
Predicted Protein Size:	122kDa
Gene Name:	desmoglein 2
Database Link:	<a href="#">NP_031909</a> <a href="#">Entrez Gene 13511 Mouse O55111</a>
Background:	The function of this protein remains unknown.
Synonyms:	ARVC10; ARVD10; CDHF5; CMD1BB; HDGC; MGC117034; MGC117036; MGC117037



[View online »](#)

Product images:



Host: Rabbit  
Target Name: Dsg2  
Sample Type: Mouse Testis lysates  
Antibody Dilution: 1.0ug/ml