

Product datasheet for **TA356460**

Dct Rabbit Polyclonal Antibody

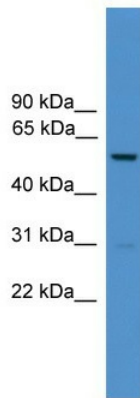
Product data:

Product Type:	Primary Antibodies
Applications:	IHC, WB
Reactivity:	Mouse, Zebrafish
Host:	Rabbit
Clonality:	Polyclonal
Immunogen:	The immunogen is a synthetic peptide corresponding to a region of Mouse
Specificity:	Expected reactivity: Cow, Dog, Guinea Pig, Horse, Human, Mouse, Rabbit, Rat, Sheep, Zebrafish Homology: Cow: 100%; Dog: 100%; Guinea Pig: 100%; Horse: 100%; Human: 100%; Mouse: 100%; Rabbit: 100%; Rat: 100%; Sheep: 100%; Zebrafish: 100%
Formulation:	Liquid. Purified antibody supplied in 1x PBS buffer with 0.09% (w/v) sodium azide and 2% sucrose. <i>Note that this product is shipped as lyophilized powder to China customers.</i>
Concentration:	lot specific
Purification:	Affinity Purified
Conjugation:	Unconjugated
Storage:	For short term use, store at 2-8°C up to 1 week. For long term storage, store at -20°C in small aliquots to prevent freeze-thaw cycles.
Stability:	Shelf life: one year from despatch.
Predicted Protein Size:	56kDa
Gene Name:	dopachrome tautomerase
Database Link:	NP_034154 Entrez Gene 13190 Mouse Q6NXI2
Background:	The function of Dct remains unknown.
Synonyms:	DT; TRP-2; TRP2; TYRP2



[View online »](#)

Product images:



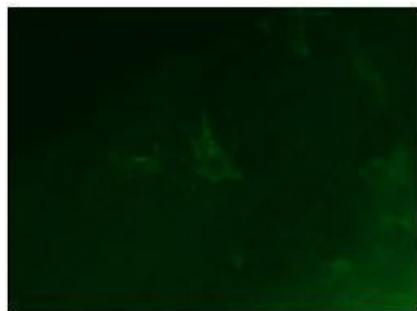
WB Suggested Anti-Dct Antibody Titration: 0.2-1 ug/ml
ELISA Titer: 1:1562500
Positive Control: Mouse Heart



Host: Rabbit
Target Name: Dct
Sample Type: Mouse Skeletal Muscle Lysate
Antibody Dilution: 1.0µg/ml

Host: Mouse
Target Name: DCT
Sample Tissue: Mouse Skeletal Muscle
Antibody Dilution: 1 ug/ml

DCT



Green: DCT

See IHC 1 Data and Customer Feedback for more Information

Sample Type:
Zebrafish embryo section
Primary Antibody Dilution:
1:50
Secondary Antibody:
Anti-rabbit-Alexa Fluor 488
Secondary Antibody Dilution:
1:500
Color/Signal Descriptions:
Green: DCT
Gene Name:
Dct
Submitted by:
Anonymous