

Product datasheet for **TA356459**

Cadherin 8 (CDH8) Rabbit Polyclonal Antibody

Product data:

Product Type:	Primary Antibodies
Applications:	WB
Reactivity:	Human, Rat
Host:	Rabbit
Clonality:	Polyclonal
Immunogen:	The immunogen is a synthetic peptide directed towards the N-terminal region of human CDH8
Specificity:	Expected reactivity: Cow, Dog, Guinea Pig, Horse, Human, Mouse, Rabbit, Rat, Zebrafish Homology: Cow: 100%; Dog: 100%; Guinea Pig: 100%; Horse: 100%; Human: 100%; Mouse: 100%; Rabbit: 100%; Rat: 100%; Zebrafish: 85%
Formulation:	Liquid. Purified antibody supplied in 1x PBS buffer with 0.09% (w/v) sodium azide and 2% sucrose. <i>Note that this product is shipped as lyophilized powder to China customers.</i>
Concentration:	lot specific
Purification:	Affinity Purified
Conjugation:	Unconjugated
Storage:	For short term use, store at 2-8°C up to 1 week. For long term storage, store at -20°C in small aliquots to prevent freeze-thaw cycles.
Stability:	Shelf life: one year from despatch.
Predicted Protein Size:	52kDa
Gene Name:	cadherin 8
Database Link:	NP_001787.2 Entrez Gene 84408 Rat Entrez Gene 1006 Human P55286



[View online »](#)

Background:

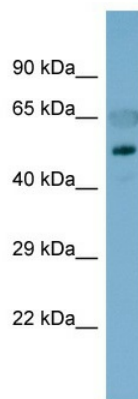
This gene encodes a type II classical cadherin from the cadherin superfamily, integral membrane proteins that mediate calcium-dependent cell-cell adhesion. Mature cadherin proteins are composed of a large N-terminal extracellular domain, a single membrane-spanning domain, and a small, highly conserved C-terminal cytoplasmic domain. The extracellular domain consists of 5 subdomains, each containing a cadherin motif, and appears to determine the specificity of the protein's homophilic cell adhesion activity. Type II (atypical) cadherins are defined based on their lack of a HAV cell adhesion recognition sequence specific to type I cadherins. This particular cadherin is expressed in brain and is putatively involved in synaptic adhesion, axon outgrowth and guidance.

Synonyms:

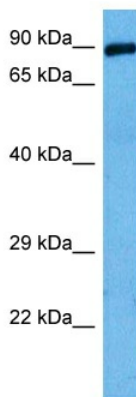
cadherin-8; Nbla04261

Protein Families:

Transmembrane

Product images:


Host: Rabbit
 Target Name: CDH8
 Sample Type: Fetal Stomach lysates
 Antibody Dilution: 1.0ug/ml



Host: Rabbit
 Target Name: Cdh8
 Sample Type: Rat Skeletal Muscle Lysate
 Antibody Dilution: 1.0µg/ml

Host: Rat
 Target Name: CDH8
 Sample Tissue: Rat Skeletal Muscle
 Antibody Dilution: 1ug/ml