

Product datasheet for **TA356458**

Dct Rabbit Polyclonal Antibody

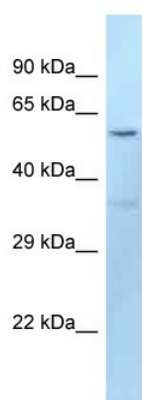
Product data:

Product Type:	Primary Antibodies
Applications:	WB
Reactivity:	Mouse
Host:	Rabbit
Clonality:	Polyclonal
Specificity:	Expected reactivity: Cow, Dog, Guinea Pig, Horse, Human, Mouse, Pig, Rabbit, Rat, Sheep Homology: Cow: 92%; Dog: 92%; Guinea Pig: 85%; Horse: 100%; Human: 100%; Mouse: 100%; Pig: 92%; Rabbit: 92%; Rat: 92%; Sheep: 92%
Formulation:	Liquid. Purified antibody supplied in 1x PBS buffer with 0.09% (w/v) sodium azide and 2% sucrose. <i>Note that this product is shipped as lyophilized powder to China customers.</i>
Concentration:	lot specific
Purification:	Affinity Purified
Conjugation:	Unconjugated
Storage:	For short term use, store at 2-8°C up to 1 week. For long term storage, store at -20°C in small aliquots to prevent freeze-thaw cycles.
Stability:	Shelf life: one year from despatch.
Predicted Protein Size:	56kDa
Gene Name:	dopachrome tautomerase
Database Link:	NP_034154 Entrez Gene 13190 Mouse P29812
Background:	The function of Dct remains unknown.
Synonyms:	DT; TRP-2; TRP2; TYRP2



[View online »](#)

Product images:



WB Suggested Anti-Dct Antibody
Titration: 1.0 ug/ml
Positive Control: Mouse Kidney