

Product datasheet for **TA356456**

CEACAM4 Rabbit Polyclonal Antibody

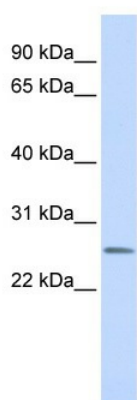
Product data:

Product Type:	Primary Antibodies
Applications:	WB
Reactivity:	Human
Host:	Rabbit
Clonality:	Polyclonal
Immunogen:	The immunogen is a synthetic peptide directed towards the N terminal region of human CEACAM4
Specificity:	Expected reactivity: Human Homology: Human: 100%
Formulation:	Liquid. Purified antibody supplied in 1x PBS buffer with 0.09% (w/v) sodium azide and 2% sucrose.
Concentration:	lot specific
Purification:	Affinity Purified
Conjugation:	Unconjugated
Storage:	For short term use, store at 2-8°C up to 1 week. For long term storage, store at -20°C in small aliquots to prevent freeze-thaw cycles.
Stability:	Shelf life: one year from despatch.
Predicted Protein Size:	26kDa
Gene Name:	carcinoembryonic antigen related cell adhesion molecule 4
Database Link:	NP_001808 Entrez Gene 1089 Human O75871
Background:	CEACAM4 belongs to the immunoglobulin superfamily.
Synonyms:	CGM7; CGM7_HUMAN; NCA
Protein Families:	Transmembrane



[View online »](#)

Product images:



WB Suggested Anti-CEACAM4 Antibody Titration:
0.2-1 ug/ml
ELISA Titer: 1:312500
Positive Control: Human Lung