

Product datasheet for **TA356454**

SERCA2 (ATP2A2) Rabbit Polyclonal Antibody

Product data:

Product Type:	Primary Antibodies
Applications:	IHC, WB
Reactivity:	Human, Mouse, Monkey
Host:	Rabbit
Clonality:	Polyclonal
Immunogen:	The immunogen is a synthetic peptide directed towards the C terminal region of human ATP2A2
Specificity:	Expected reactivity: Cow, Dog, Guinea Pig, Horse, Human, Mouse, Rabbit, Rat, Zebrafish Homology: Cow: 100%; Dog: 100%; Guinea Pig: 100%; Horse: 100%; Human: 100%; Mouse: 100%; Rabbit: 100%; Rat: 100%; Zebrafish: 100%
Formulation:	Liquid. Purified antibody supplied in 1x PBS buffer with 0.09% (w/v) sodium azide and 2% sucrose. <i>Note that this product is shipped as lyophilized powder to China customers.</i>
Concentration:	lot specific
Purification:	Affinity Purified
Conjugation:	Unconjugated
Storage:	For short term use, store at 2-8°C up to 1 week. For long term storage, store at -20°C in small aliquots to prevent freeze-thaw cycles.
Stability:	Shelf life: one year from despatch.
Predicted Protein Size:	115kDa
Gene Name:	ATPase sarcoplasmic/endoplasmic reticulum Ca ²⁺ transporting 2
Database Link:	NP_733765 Entrez Gene 11938 Mouse Entrez Gene 488 Human P16615



[View online »](#)

Background:

ATP2A2 is one of the SERCA Ca(2+)-ATPases, which are intracellular pumps located in the sarcoplasmic or endoplasmic reticula of muscle cells. This enzyme catalyzes the hydrolysis of ATP coupled with the translocation of calcium from the cytosol into the sarcoplasmic reticulum lumen, and is involved in regulation of the contraction/relaxation cycle. Mutations in this gene cause Darier-White disease, also known as keratosis follicularis, an autosomal dominant skin disorder characterized by loss of adhesion between epidermal cells and abnormal keratinization. Alternative splicing results in multiple transcript variants encoding different isoforms. This gene encodes one of the SERCA Ca(2+)-ATPases, which are intracellular pumps located in the sarcoplasmic or endoplasmic reticula of muscle cells. This enzyme catalyzes the hydrolysis of ATP coupled with the translocation of calcium from the cytosol to the sarcoplasmic reticulum lumen, and is involved in regulation of the contraction/relaxation cycle. Mutations in this gene cause Darier-White disease, also known as keratosis follicularis, an autosomal dominant skin disorder characterized by loss of adhesion between epidermal cells and abnormal keratinization. Alternative splicing results in two transcript variants encoding different isoforms.

Synonyms:

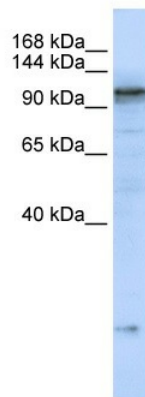
ATP2B; DAR; DD; DKFZp686P0211; FLJ20293; FLJ38063; MGC45367; SERCA2

Protein Families:

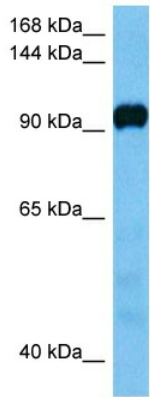
Druggable Genome, Transmembrane

Protein Pathways:

Alzheimer's disease, Arrhythmogenic right ventricular cardiomyopathy (ARVC), Calcium signaling pathway, Cardiac muscle contraction, Dilated cardiomyopathy, Hypertrophic cardiomyopathy (HCM)

Product images:

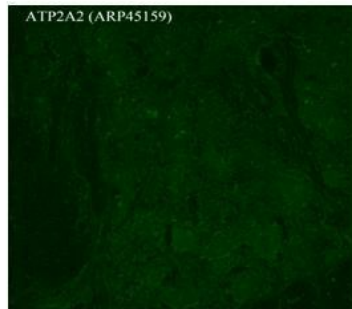
WB Suggested Anti-ATP2A2 Antibody Titration:
0.2-1 ug/ml
ELISA Titer: 1:62500
Positive Control: MCF7 cell lysate



Host: Rabbit
 Target Name: Atp2a3
 Sample Type: Mouse Liver Lysate
 Antibody Dilution: 1.0µg/ml

Host: Mouse
 Target Name: ATP2A3
 Sample Tissue: Mouse Liver
 Antibody Dilution: 1 ug/ml

ATP2A2



Green: ATP2A2

See IHC 1 Data and Customer Feedback for more Information

Sample Type:
 Rhesus macaque spinal cord
 Primary Antibody Dilution:
 1:300
 Secondary Antibody:
 Donkey anti Rabbit 488
 Secondary Antibody Dilution:
 1:500
 Color/Signal Descriptions:
 Green: ATP2A2
 Gene Name:
 APLP2
 Submitted by:
 Timur Mavlyutov, Ph. D., Department of
 Pharmacology, University of Wisconsin Medical
 School, 1300 University Avenue, Madison, WI
 53706