

## Product datasheet for **TA356452**

### Acp2 Rabbit Polyclonal Antibody

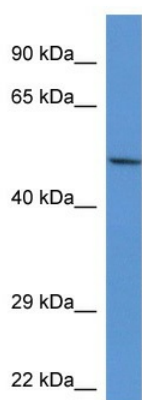
#### Product data:

Product Type:	Primary Antibodies
Applications:	WB
Reactivity:	Rat
Host:	Rabbit
Clonality:	Polyclonal
Immunogen:	The immunogen is a synthetic peptide corresponding to a region of Rat
Specificity:	<b>Expected reactivity:</b> Cow, Dog, Guinea Pig, Horse, Human, Mouse, Pig, Rabbit, Rat <b>Homology:</b> Cow: 100%; Dog: 100%; Guinea Pig: 86%; Horse: 93%; Human: 100%; Mouse: 100%; Pig: 93%; Rabbit: 100%; Rat: 93%
Formulation:	Liquid. Purified antibody supplied in 1x PBS buffer with 0.09% (w/v) sodium azide and 2% sucrose. <i>Note that this product is shipped as lyophilized powder to China customers.</i>
Concentration:	lot specific
Purification:	Affinity Purified
Conjugation:	Unconjugated
Storage:	For short term use, store at 2-8°C up to 1 week. For long term storage, store at -20°C in small aliquots to prevent freeze-thaw cycles.
Stability:	Shelf life: one year from despatch.
Predicted Protein Size:	48kDa
Gene Name:	acid phosphatase 2, lysosomal
Database Link:	<a href="#">NP_058684</a> <a href="#">Entrez Gene 24162 Rat</a> <a href="#">Q642D2</a>
Background:	Acp2 catalyzes the hydrolysis of p-nitrophenyl phosphate; It may play a role in synaptic transmission.
Synonyms:	LAP



[View online »](#)

Product images:



WB Suggested Anti-Acp2 Antibody  
Titration: 1.0 ug/ml  
Positive Control: Rat Kidney