

## Product datasheet for **TA356451**

### IL12RB2 Rabbit Polyclonal Antibody

#### Product data:

Product Type:	Primary Antibodies
Applications:	WB
Reactivity:	Human
Host:	Rabbit
Clonality:	Polyclonal
Immunogen:	The immunogen is a synthetic peptide directed towards the middle region of Human IL12RB2
Specificity:	<b>Expected reactivity:</b> Cow, Dog, Guinea Pig, Horse, Human, Mouse, Pig, Rabbit, Rat, Sheep <b>Homology:</b> Cow: 100%; Dog: 93%; Guinea Pig: 86%; Horse: 86%; Human: 100%; Mouse: 100%; Pig: 100%; Rabbit: 92%; Rat: 100%; Sheep: 100%
Formulation:	Liquid. Purified antibody supplied in 1x PBS buffer with 0.09% (w/v) sodium azide and 2% sucrose. <i>Note that this product is shipped as lyophilized powder to China customers.</i>
Concentration:	lot specific
Purification:	Affinity Purified
Conjugation:	Unconjugated
Storage:	For short term use, store at 2-8°C up to 1 week. For long term storage, store at -20°C in small aliquots to prevent freeze-thaw cycles.
Stability:	Shelf life: one year from despatch.
Predicted Protein Size:	72kDa
Gene Name:	interleukin 12 receptor subunit beta 2
Database Link:	<a href="#">Entrez Gene 3595 Human Q99665-2</a>



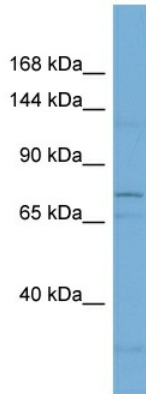
[View online »](#)

**Background:**

The protein encoded by this gene is a type I transmembrane protein identified as a subunit of the interleukin 12 receptor complex. The coexpression of this and IL12RB1 proteins was shown to lead to the formation of high-affinity IL12 binding sites and reconstitution of IL12 dependent signaling. The expression of this gene is up-regulated by interferon gamma in Th1 cells, and plays a role in Th1 cell differentiation. The up-regulation of this gene is found to be associated with a number of infectious diseases, such as Crohn's disease and leprosy, which is thought to contribute to the inflammatory response and host defense.

**Synonyms:**

IL-12R-beta-2

**Product images:**


Host: Rabbit  
 Target Name: IL12RB2  
 Sample Tissue: 721\_B Cell Lysate  
 Antibody Dilution: 1.0µg/ml

Host: Rabbit  
 Target Name: IL12RB2  
 Sample Type: 721\_B Whole Cell lysates  
 Antibody Dilution: 1.0ug/ml IL12RB2 is supported by BioGPS gene expression data to be expressed in 721\_B