

## Product datasheet for **TA356449**

### Atp1b2 Rabbit Polyclonal Antibody

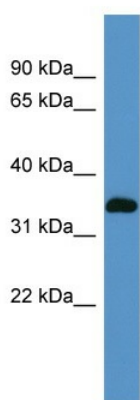
#### Product data:

Product Type:	Primary Antibodies
Applications:	IHC, WB
Reactivity:	Mouse
Host:	Rabbit
Clonality:	Polyclonal
Immunogen:	The immunogen is a synthetic peptide corresponding to a region of Mouse
Specificity:	<b>Expected reactivity:</b> Cow, Dog, Guinea Pig, Horse, Human, Mouse, Rabbit, Rat, Zebrafish <b>Homology:</b> Cow: 100%; Dog: 100%; Guinea Pig: 100%; Horse: 100%; Human: 100%; Mouse: 100%; Rabbit: 93%; Rat: 100%; Zebrafish: 79%
Formulation:	Liquid. Purified antibody supplied in 1x PBS buffer with 0.09% (w/v) sodium azide and 2% sucrose. <i>Note that this product is shipped as lyophilized powder to China customers.</i>
Concentration:	lot specific
Purification:	Affinity Purified
Conjugation:	Unconjugated
Storage:	For short term use, store at 2-8°C up to 1 week. For long term storage, store at -20°C in small aliquots to prevent freeze-thaw cycles.
Stability:	Shelf life: one year from despatch.
Predicted Protein Size:	33kDa
Gene Name:	ATPase, Na <sup>+</sup> /K <sup>+</sup> transporting, beta 2 polypeptide
Database Link:	<a href="#">NP_038201</a> <a href="#">Entrez Gene 11932 Mouse P14231</a>
Background:	This is the non-catalytic component of the active enzyme, which catalyzes the hydrolysis of ATP coupled with the exchange of Na <sup>+</sup> and K <sup>+</sup> ions across the plasma membrane. The exact function of the beta-2 subunit is not known.
Synonyms:	AMOG



[View online »](#)

Product images:



WB Suggested Anti-Atp1b2 Antibody Titration:  
0.2-1 ug/ml  
ELISA Titer: 1:62500  
Positive Control: Mouse Kidney