

Product datasheet for **TA356447**

Megf6 Rabbit Polyclonal Antibody

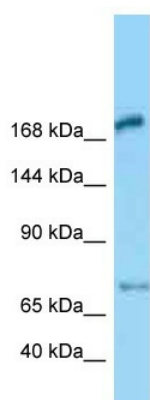
Product data:

Product Type:	Primary Antibodies
Applications:	WB
Reactivity:	Rat
Host:	Rabbit
Clonality:	Polyclonal
Immunogen:	The immunogen is a synthetic peptide directed towards the middle region of Megf6
Specificity:	Expected reactivity: Dog, Guinea Pig, Human, Mouse, Rat Homology: Dog: 86%; Guinea Pig: 86%; Human: 100%; Mouse: 93%; Rat: 93%
Formulation:	Liquid. Purified antibody supplied in 1x PBS buffer with 0.09% (w/v) sodium azide and 2% sucrose. <i>Note that this product is shipped as lyophilized powder to China customers.</i>
Concentration:	lot specific
Purification:	Affinity Purified
Conjugation:	Unconjugated
Storage:	For short term use, store at 2-8°C up to 1 week. For long term storage, store at -20°C in small aliquots to prevent freeze-thaw cycles.
Stability:	Shelf life: one year from despatch.
Predicted Protein Size:	173kDa
Gene Name:	multiple EGF-like-domains 6
Database Link:	NP_075244 Entrez Gene 65049 Rat O88281
Background:	The function of this protein remains unknown.
Synonyms:	EGFL3; KIAA0815



[View online »](#)

Product images:



WB Suggested Anti-Megf6 Antibody
Titration: 1.0 ug/ml
Positive Control: Rat Lung