

Product datasheet for **TA356445**

DSCAM Rabbit Polyclonal Antibody

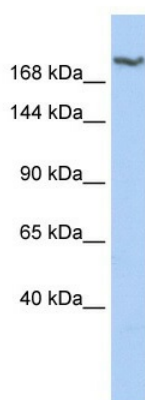
Product data:

Product Type:	Primary Antibodies
Applications:	IP, WB
Reactivity:	Human, Mouse
Host:	Rabbit
Clonality:	Polyclonal
Immunogen:	The immunogen is a synthetic peptide directed towards the middle region of human DSCAM
Specificity:	Expected reactivity: Cow, Dog, Guinea Pig, Horse, Human, Mouse, Pig, Rabbit, Rat Homology: Cow: 93%; Dog: 100%; Guinea Pig: 93%; Horse: 100%; Human: 100%; Mouse: 100%; Pig: 100%; Rabbit: 100%; Rat: 100%
Formulation:	Liquid. Purified antibody supplied in 1x PBS buffer with 0.09% (w/v) sodium azide and 2% sucrose. <i>Note that this product is shipped as lyophilized powder to China customers.</i>
Concentration:	lot specific
Purification:	Affinity Purified
Conjugation:	Unconjugated
Storage:	For short term use, store at 2-8°C up to 1 week. For long term storage, store at -20°C in small aliquots to prevent freeze-thaw cycles.
Stability:	Shelf life: one year from despatch.
Predicted Protein Size:	220kDa
Gene Name:	DS cell adhesion molecule
Database Link:	NP_001380 Entrez Gene 13508 Mouse Entrez Gene 1826 Human O60469
Background:	DSCAM is a cell adhesion molecule that can mediate cation-independent homophilic binding activity. DSCAM could be involved in nervous system development.
Synonyms:	CHD2-42; CHD2-52
Protein Families:	Transmembrane

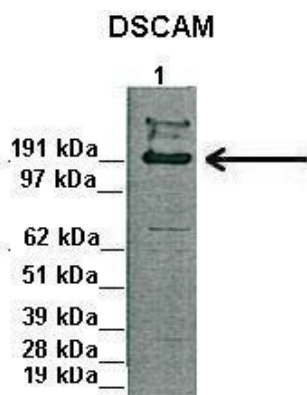


[View online »](#)

Product images:



WB Suggested Anti-DSCAM Antibody Titration:
 0.2-1 ug/ml
 ELISA Titer: 1:1562500
 Positive Control: HepG2 cell lysate



Amount and Sample Type:
 10 cm sq plate myc-DSCAM transfected mouse neuro2a cells
 Primary Antibody:
 DSCAM
 Primary Antibody Dilution:
 1:1000
 Secondary Antibody:
 Anti-Rabbit HRP
 Secondary Antibody Dilution:
 1:5000
 Gene Name:
 DSCAM
 Submitted by:
 Amir Gamliel, UCSD

See WB 2 Data and Customer Feedback for more information