

Product datasheet for **TA356443**

Flt3 ligand (FLT3LG) Rabbit Polyclonal Antibody

Product data:

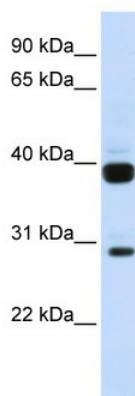
Product Type:	Primary Antibodies
Applications:	WB
Reactivity:	Human
Host:	Rabbit
Clonality:	Polyclonal
Immunogen:	The immunogen is a synthetic peptide directed towards the N terminal region of human FLT3LG
Specificity:	Expected reactivity: Cow, Dog, Human, Sheep Homology: Cow: 79%; Dog: 85%; Human: 100%; Sheep: 79%
Formulation:	Liquid. Purified antibody supplied in 1x PBS buffer with 0.09% (w/v) sodium azide and 2% sucrose. <i>Note that this product is shipped as lyophilized powder to China customers.</i>
Concentration:	lot specific
Purification:	Affinity Purified
Conjugation:	Unconjugated
Storage:	For short term use, store at 2-8°C up to 1 week. For long term storage, store at -20°C in small aliquots to prevent freeze-thaw cycles.
Stability:	Shelf life: one year from despatch.
Predicted Protein Size:	26kDa
Gene Name:	fms related tyrosine kinase 3 ligand
Database Link:	NP_001450 Entrez Gene 2323 Human P49771
Background:	FLT3LG stimulates the proliferation of early hematopoietic cells and synergizes well with a number of other colony stimulating factors and interleukins.
Synonyms:	FL; Flt3L
Protein Families:	Druggable Genome, ES Cell Differentiation/IPS, Secreted Protein, Transmembrane



[View online »](#)

Protein Pathways: Cytokine-cytokine receptor interaction, Hematopoietic cell lineage, Pathways in cancer

Product images:



WB Suggested Anti-FLT3LG Antibody Titration:
0.2-1 ug/ml
ELISA Titer: 1:312500
Positive Control: Human Muscle