

Product datasheet for **TA356440**

COX10 Rabbit Polyclonal Antibody

Product data:

Product Type:	Primary Antibodies
Applications:	WB
Reactivity:	Human
Host:	Rabbit
Clonality:	Polyclonal
Immunogen:	The immunogen is a synthetic peptide directed towards the middle region of human COX10
Specificity:	Expected reactivity: Cow, Dog, Guinea Pig, Horse, Human, Mouse, Rabbit, Rat, Yeast, Zebrafish Homology: Cow: 100%; Dog: 100%; Guinea Pig: 100%; Horse: 100%; Human: 100%; Mouse: 100%; Rabbit: 100%; Rat: 100%; Yeast: 83%; Zebrafish: 100%
Formulation:	Liquid. Purified antibody supplied in 1x PBS buffer with 0.09% (w/v) sodium azide and 2% sucrose. <i>Note that this product is shipped as lyophilized powder to China customers.</i>
Concentration:	lot specific
Purification:	Affinity Purified
Conjugation:	Unconjugated
Storage:	For short term use, store at 2-8°C up to 1 week. For long term storage, store at -20°C in small aliquots to prevent freeze-thaw cycles.
Stability:	Shelf life: one year from despatch.
Predicted Protein Size:	49kDa
Gene Name:	COX10 heme A:farnesyltransferase cytochrome c oxidase assembly factor
Database Link:	NP_001294 Entrez Gene 1352 Human Q12887
Background:	Cytochrome c oxidase (COX), the terminal component of the mitochondrial respiratory chain, catalyzes the electron transfer from reduced cytochrome c to oxygen. COX10 is heme A: farnesyltransferase, which is not a structural subunit but required for the ex
Synonyms:	COX10

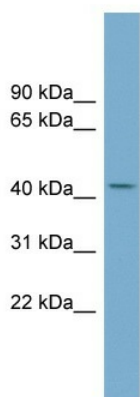


[View online »](#)

Protein Families: Druggable Genome, Transmembrane

Protein Pathways: Metabolic pathways, Oxidative phosphorylation, Porphyrin and chlorophyll metabolism

Product images:



WB Suggested Anti-COX10 Antibody Titration: 0.2-1 ug/ml
ELISA Titer: 1:312500
Positive Control: Human Spleen