

## Product datasheet for **TA356438**

### ART3 Rabbit Polyclonal Antibody

#### Product data:

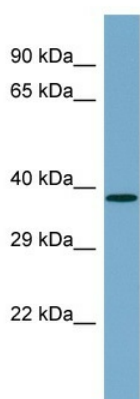
Product Type:	Primary Antibodies
Applications:	WB
Reactivity:	Human
Host:	Rabbit
Clonality:	Polyclonal
Immunogen:	The immunogen is a synthetic peptide directed towards the N-terminal region of Human ART3
Specificity:	<b>Expected reactivity:</b> Cow, Dog, Guinea Pig, Horse, Human, Rabbit, Rat <b>Homology:</b> Cow: 86%; Dog: 79%; Guinea Pig: 93%; Horse: 93%; Human: 100%; Rabbit: 86%; Rat: 93%
Formulation:	Liquid. Purified antibody supplied in 1x PBS buffer with 0.09% (w/v) sodium azide and 2% sucrose. <i>Note that this product is shipped as lyophilized powder to China customers.</i>
Concentration:	lot specific
Purification:	Affinity Purified
Conjugation:	Unconjugated
Storage:	For short term use, store at 2-8°C up to 1 week. For long term storage, store at -20°C in small aliquots to prevent freeze-thaw cycles.
Stability:	Shelf life: one year from despatch.
Predicted Protein Size:	40kDa
Gene Name:	ADP-ribosyltransferase 3
Database Link:	<a href="#">NP_001170</a> <a href="#">Entrez Gene 419 Human</a> <a href="#">Q13508-2</a>
Background:	ADP-ribosylation is a reversible posttranslational modification used to regulate protein function. ADP-ribosyltransferases, such as ART3, transfer ADP-ribose from NAD <sup>+</sup> to the target protein, and ADP-ribosylhydrolases (see PARG; MIM 603501) reverse the rea
Synonyms:	FLJ26404; mono-ADP-ribosyltransferase; TMART



[View online »](#)

Protein Families: Transmembrane

### Product images:



Host: Rabbit  
Target Name: ART3  
Sample Type: Fetal Kidney lysates  
Antibody Dilution: 1.0ug/ml