

## Product datasheet for **TA356433**

### ART3 Rabbit Polyclonal Antibody

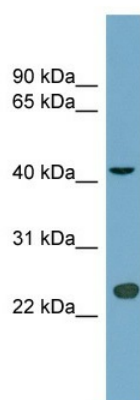
#### Product data:

Product Type:	Primary Antibodies
Applications:	WB
Reactivity:	Human
Host:	Rabbit
Clonality:	Polyclonal
Immunogen:	The immunogen is a synthetic peptide directed towards the middle region of human ART3
Specificity:	<b>Expected reactivity:</b> Cow, Dog, Horse, Human, Mouse, Rabbit, Rat <b>Homology:</b> Cow: 100%; Dog: 93%; Horse: 92%; Human: 100%; Mouse: 100%; Rabbit: 86%; Rat: 92%
Formulation:	Liquid. Purified antibody supplied in 1x PBS buffer with 0.09% (w/v) sodium azide and 2% sucrose. <i>Note that this product is shipped as lyophilized powder to China customers.</i>
Concentration:	lot specific
Purification:	Affinity Purified
Conjugation:	Unconjugated
Storage:	For short term use, store at 2-8°C up to 1 week. For long term storage, store at -20°C in small aliquots to prevent freeze-thaw cycles.
Stability:	Shelf life: one year from despatch.
Predicted Protein Size:	40kDa
Gene Name:	ADP-ribosyltransferase 3
Database Link:	<a href="#">NP_001123489</a> <a href="#">Entrez Gene 419 Human</a> <a href="#">Q13508</a>
Background:	ADP-ribosylation is a reversible posttranslational modification used to regulate protein function. ADP-ribosyltransferases, such as ART3, transfer ADP-ribose from NAD <sup>+</sup> to the target protein, and ADP-ribosylhydrolases (see PARG; MIM 603501) reverse the rea
Synonyms:	FLJ26404; mono-ADP-ribosyltransferase; TMART
Protein Families:	Transmembrane



[View online »](#)

## Product images:



WB Suggested Anti-ART3 Antibody Titration: 0.2-1 ug/ml  
Positive Control: Human Thymus