

Product datasheet for **TA356428**

Activin Receptor Type IIB (ACVR2B) Rabbit Polyclonal Antibody

Product data:

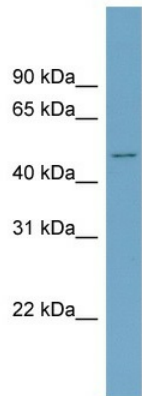
Product Type:	Primary Antibodies
Applications:	WB
Reactivity:	Human, Mouse
Host:	Rabbit
Clonality:	Polyclonal
Immunogen:	The immunogen is a synthetic peptide directed towards the middle region of human ACVR2B
Specificity:	Expected reactivity: Cow, Dog, Guinea Pig, Horse, Human, Mouse, Rat, Sheep, Zebrafish Homology: Cow: 100%; Dog: 100%; Guinea Pig: 100%; Horse: 100%; Human: 100%; Mouse: 100%; Rat: 100%; Sheep: 100%; Zebrafish: 86%
Formulation:	Liquid. Purified antibody supplied in 1x PBS buffer with 0.09% (w/v) sodium azide and 2% sucrose. <i>Note that this product is shipped as lyophilized powder to China customers.</i>
Concentration:	lot specific
Purification:	Affinity Purified
Conjugation:	Unconjugated
Storage:	For short term use, store at 2-8°C up to 1 week. For long term storage, store at -20°C in small aliquots to prevent freeze-thaw cycles.
Stability:	Shelf life: one year from despatch.
Predicted Protein Size:	58kDa
Gene Name:	activin A receptor type 2B
Database Link:	NP_001097 Entrez Gene 93 Human Q13705
Background:	Activin receptors are all transmembrane proteins, composed of a ligand-binding extracellular domain with cysteine-rich region, a transmembrane domain, and a cytoplasmic domain with predicted serine/threonine specificity. Type I receptors are essential for
Synonyms:	ActR-IIB; ACTRIIB; MGC116908
Protein Families:	Druggable Genome, Protein Kinase, Transmembrane



[View online »](#)

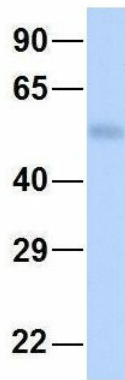
Protein Pathways: Cytokine-cytokine receptor interaction, TGF-beta signaling pathway

Product images:



WB Suggested Anti-ACVR2B Antibody Titration:
0.2-1 ug/ml
ELISA Titer: 1:1562500
Positive Control: PANC1 cell lysate

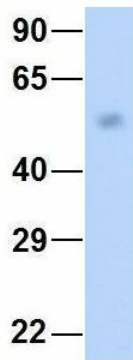
ACVR2B



Rabbit Anti-ACVR2B
Sample Type: Human Fetal Muscle
Antibody Concentration: 1ug/mL

Host: Rabbit
Target Name: NOP56
Sample Type: Human Fetal Muscle
Antibody Dilution: 1.0ug/ml

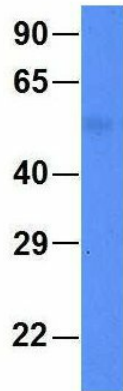
ACVR2B



Rabbit Anti-ACVR2B
 Sample Type: Human Fetal Heart
 Antibody Concentration: 1ug/mL

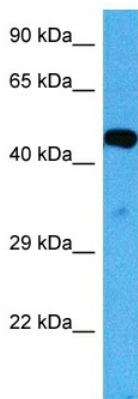
Host: Rabbit
 Target Name: GNAS
 Sample Type: Human Fetal Heart
 Antibody Dilution: 1.0ug/ml

ACVR2B



Rabbit Anti-ACVR2B
 Sample Type: Human Fetal Liver
 Antibody Concentration: 1ug/mL

Host: Rabbit
 Target Name: FAM46C
 Sample Type: Human Fetal Liver
 Antibody Dilution: 1.0ug/ml



Host: Rabbit
 Target Name: Acvr2b
 Sample Type: Mouse Skeletal Muscle Lysate
 Antibody Dilution: 1.0µg/ml

Host: Mouse
 Target Name: ACVR2B
 Sample Tissue: Mouse Skeletal Muscle
 Antibody Dilution: 1ug/ml