

## Product datasheet for **TA356420**

### Fukutin (FKTN) Rabbit Polyclonal Antibody

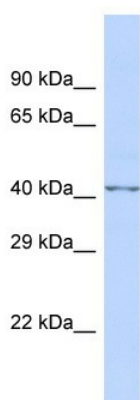
#### Product data:

Product Type:	Primary Antibodies
Applications:	WB
Reactivity:	Human
Host:	Rabbit
Clonality:	Polyclonal
Immunogen:	The immunogen is a synthetic peptide directed towards the N-terminal region of Human FKTN
Specificity:	<b>Expected reactivity:</b> Cow, Dog, Guinea Pig, Horse, Human, Rabbit, Rat <b>Homology:</b> Cow: 92%; Dog: 92%; Guinea Pig: 100%; Horse: 100%; Human: 100%; Rabbit: 92%; Rat: 100%
Formulation:	Liquid. Purified antibody supplied in 1x PBS buffer with 0.09% (w/v) sodium azide and 2% sucrose. <i>Note that this product is shipped as lyophilized powder to China customers.</i>
Concentration:	lot specific
Purification:	Affinity Purified
Conjugation:	Unconjugated
Storage:	For short term use, store at 2-8°C up to 1 week. For long term storage, store at -20°C in small aliquots to prevent freeze-thaw cycles.
Stability:	Shelf life: one year from despatch.
Predicted Protein Size:	47kDa
Gene Name:	fukutin
Database Link:	<a href="#">NP_006722</a> <a href="#">Entrez Gene 2218 Human</a> <a href="#">O75072-2</a>
Background:	FKTN regulates the migration and assembly of neurons during cortical histogenesis. Fukuyama congenital muscular dystrophy results from mutations in its gene.
Synonyms:	CMD1X; FCMD; fukutin; LGMD2M; MGC126857; MGC134944; MGC134945; MGC138243
Protein Families:	Transmembrane



[View online »](#)

Product images:



Host: Rabbit  
Target Name: FKTN  
Sample Type: Fetal Brain lysates  
Antibody Dilution: 1.0ug/ml