

Product datasheet for **TA356419**

Kinectin 1 (KTN1) Rabbit Polyclonal Antibody

Product data:

Product Type:	Primary Antibodies
Applications:	WB
Reactivity:	Human
Host:	Rabbit
Clonality:	Polyclonal
Immunogen:	The immunogen is a synthetic peptide directed towards the middle region of human KTN1
Specificity:	Expected reactivity: Human Homology: Cow: 100%; Dog: 92%; Guinea Pig: 92%; Horse: 100%; Human: 100%; Mouse: 92%; Rabbit: 85%; Rat: 92%; Yeast: 83%
Formulation:	Liquid. Purified antibody supplied in 1x PBS buffer with 0.09% (w/v) sodium azide and 2% sucrose.
Concentration:	lot specific
Purification:	Affinity purified
Conjugation:	Unconjugated
Storage:	For short term use, store at 2-8°C up to 1 week. For long term storage, store at -20°C in small aliquots to prevent freeze-thaw cycles.
Stability:	Shelf life: one year from despatch.
Predicted Protein Size:	149 kDa
Gene Name:	kinectin 1
Database Link:	NP_001072989.1 Entrez Gene 3895 Human Q86UP2
Background:	This gene encodes an integral membrane protein that is a member of the kinectin protein family. The encoded protein is primarily localized to the endoplasmic reticulum membrane. This protein binds kinesin and may be involved in intracellular organelle motility. This protein also binds translation elongation factor-delta and may be involved in the assembly of the elongation factor-1 complex. Alternate splicing results in multiple transcript variants of this gene.

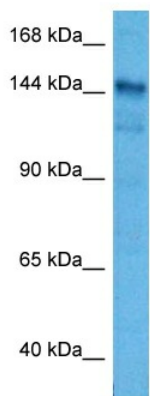


[View online »](#)

Synonyms: CG1; KIAA0004; KNT; MGC133337; MU-RMS-40.19; OTTHUMP00000179011

Protein Families: Druggable Genome, Transmembrane

Product images:



Host: Rabbit
Target Name: KTN1
Sample Type: 293T Cell Lysate
Antibody Dilution: 1.0 μ g/ml

Host: Rabbit
Target Name: KTN1
Sample Tissue: Human 293T Whole Cell lysates
Antibody Dilution: 1 μ g/ml