

## Product datasheet for **TA356411**

### SLC38A10 Rabbit Polyclonal Antibody

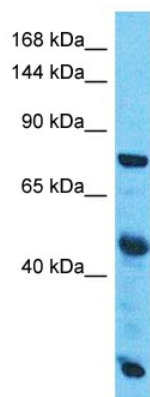
#### Product data:

Product Type:	Primary Antibodies
Applications:	WB
Reactivity:	Human
Host:	Rabbit
Clonality:	Polyclonal
Immunogen:	The immunogen is a synthetic peptide directed towards the C-terminal region of Human SLC38A10
Specificity:	<b>Expected reactivity:</b> Guinea Pig, Human, Mouse, Rat, Yeast <b>Homology:</b> Guinea Pig: 93%; Human: 100%; Mouse: 91%; Rat: 93%; Yeast: 77%
Formulation:	Liquid. Purified antibody supplied in 1x PBS buffer with 0.09% (w/v) sodium azide and 2% sucrose.
Concentration:	lot specific
Purification:	Affinity Purified
Conjugation:	Unconjugated
Storage:	For short term use, store at 2-8°C up to 1 week. For long term storage, store at -20°C in small aliquots to prevent freeze-thaw cycles.
Stability:	Shelf life: one year from despatch.
Predicted Protein Size:	75kDa
Gene Name:	solute carrier family 38 member 10
Database Link:	<a href="#">Entrez Gene 124565 Human</a> <a href="#">Q9HBR0-3</a>
Background:	SLC38A10 is a putative sodium-dependent amino acid/proton antiporter.
Synonyms:	FLJ35718; FLJ46399; MGC15523; PP1744



[View online »](#)

## Product images:



Host: Rabbit  
Target Name: SLC38A10  
Sample Tissue: Esophagus Tumor Lysate  
Antibody Dilution: 1.0 $\mu$ g/ml

Host: Rabbit  
Target Name: SLC38A10  
Sample Type: Esophagus Tumor lysates  
Antibody Dilution: 1.0ug/ml