

Product datasheet for **TA356410**

MIRO1 (RHOT1) Rabbit Polyclonal Antibody

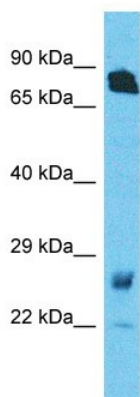
Product data:

Product Type:	Primary Antibodies
Applications:	IHC, IP, WB
Reactivity:	Human
Host:	Rabbit
Clonality:	Polyclonal
Immunogen:	The immunogen is a synthetic peptide directed towards the N terminal region of human RHOT1
Specificity:	Expected reactivity: Cow, Dog, Guinea Pig, Horse, Human, Mouse, Rabbit, Rat, Zebrafish Homology: Cow: 100%; Dog: 100%; Guinea Pig: 100%; Horse: 100%; Human: 100%; Mouse: 100%; Rabbit: 100%; Rat: 100%; Zebrafish: 93%
Formulation:	Liquid. Purified antibody supplied in 1x PBS buffer with 0.09% (w/v) sodium azide and 2% sucrose. <i>Note that this product is shipped as lyophilized powder to China customers.</i>
Concentration:	lot specific
Purification:	Affinity Purified
Conjugation:	Unconjugated
Storage:	For short term use, store at 2-8°C up to 1 week. For long term storage, store at -20°C in small aliquots to prevent freeze-thaw cycles.
Stability:	Shelf life: one year from despatch.
Predicted Protein Size:	71kDa
Gene Name:	ras homolog family member T1
Database Link:	NP_060777 Entrez Gene 55288 Human Q8IXI2
Background:	Mitochondrial GTPase involved in mitochondrial trafficking. RHOT1 is probably involved in control of anterograde transport of mitochondria and their subcellular distribution.
Synonyms:	ARHT1; FLJ11040; FLJ12633; hMiro-1; MIRO-1
Protein Families:	Transmembrane



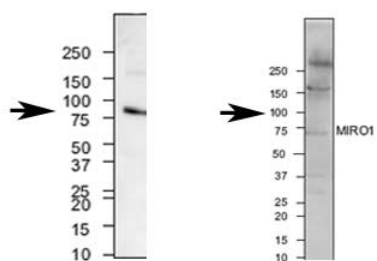
[View online »](#)

Product images:



Host: Rabbit
 Target Name: RHOT1
 Sample Type: Fetal Lung lysates
 Antibody Dilution: 1.0ug/ml

RHOT1



mouse brain and human neuroblastoma

See Immunoblot 2 Data and Customer Feedback tab for more information.

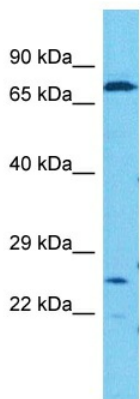


Host: Rabbit
Target Name: MIRO1
Sample Tissue: Fetal Lung Lysate
Antibody Dilution: 1.0 μ g/ml

Host: Rabbit
Target Name: MIRO1
Sample Type: Fetal Lung lysates
Antibody Dilution: 1.0 μ g/ml

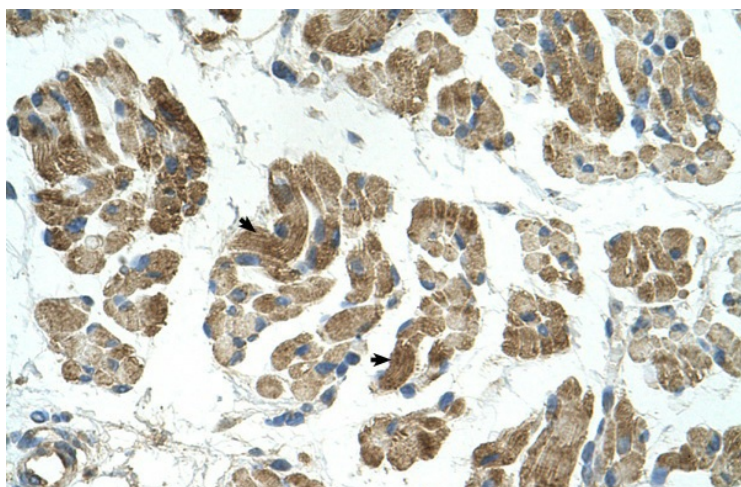


WB Suggested Anti-RHOT1 antibody Titration: 1 μ g/mL
Sample Type: Human A549

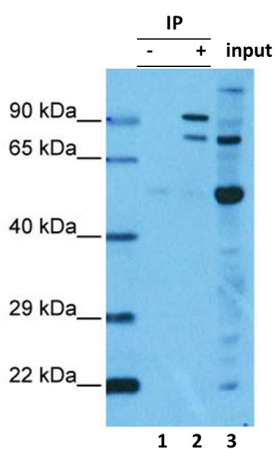


Host: Rabbit
Target Name: RHOT1
Sample Type: A549 Cell Lysate
Antibody Dilution: 1.0 μ g/ml

Host: Rabbit
Target Name: RHOT1
Sample Tissue: Human A549 Whole Cell
Antibody Dilution: 1 μ g/ml



Rabbit Anti-RHOT1 Antibody
 Catalog Number: ARP44817
 Paraffin Embedded Tissue: Human Muscle
 Cellular Data: Skeletal muscle cells
 Antibody Concentration: 4.0-8.0 ug/ml
 Magnification: 400X



Lysate: HEK293 2mg
 IP: ARP44817 2ug
 Detection: RHOT1 3ug/ml

RHOT1 was immunoprecipitated from 2 mg HEK293 Whole Cell Lysate with TA356410 with 1:200 dilution. Western blot was performed using TA356410 at 1/1000 dilution.
 Lane 1: Control IP in HEK293 Whole Cell Lysate.
 Lane 2: RHOT1 IP with TA356410 in HEK293 Whole Cell Lysate.
 Lane 3: Input of HEK293 Whole Cell Lysate.