

Product datasheet for **TA356409**

ERP29 Rabbit Polyclonal Antibody

Product data:

Product Type:	Primary Antibodies
Applications:	IHC, WB
Reactivity:	Human
Host:	Rabbit
Clonality:	Polyclonal
Immunogen:	The immunogen is a synthetic peptide directed towards the N terminal region of human ERP29
Specificity:	Expected reactivity: Cow, Dog, Guinea Pig, Horse, Human, Mouse, Rabbit, Rat, Sheep Homology: Cow: 93%; Dog: 100%; Guinea Pig: 100%; Horse: 93%; Human: 100%; Mouse: 100%; Rabbit: 100%; Rat: 100%; Sheep: 93%
Formulation:	Liquid. Purified antibody supplied in 1x PBS buffer with 0.09% (w/v) sodium azide and 2% sucrose. <i>Note that this product is shipped as lyophilized powder to China customers.</i>
Concentration:	lot specific
Purification:	Affinity Purified
Conjugation:	Unconjugated
Storage:	For short term use, store at 2-8°C up to 1 week. For long term storage, store at -20°C in small aliquots to prevent freeze-thaw cycles.
Stability:	Shelf life: one year from despatch.
Predicted Protein Size:	26kDa
Gene Name:	endoplasmic reticulum protein 29
Database Link:	NP_006808 Entrez Gene 10961 Human P30040



[View online »](#)

Background:

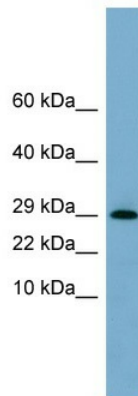
This gene encodes a reticuloplasmin, a protein which resides in the lumen of the endoplasmic reticulum (ER). The protein shows sequence similarity to the protein disulfide isomerase family. However, it lacks the thioredoxin motif characteristic of this family, suggesting that this protein does not function as a disulfide isomerase. The protein dimerizes and is thought to play a role in the processing of secretory proteins within the ER. Alternative splicing results in multiple transcript variants encoding different isoforms.

Synonyms:

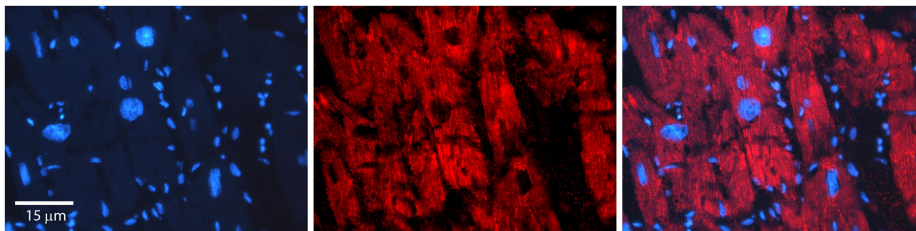
C12orf8; ERP28; ERp31; PDI-DB; PDIA9

Protein Families:

Transmembrane

Product images:


WB Suggested Anti-ERP29 Antibody Titration: 0.2-1 ug/ml
 Positive Control: ACHN cell lysate
 ERP29 is supported by BioGPS gene expression data to be expressed in ACHN



Rabbit Anti-ERP29 Antibody
 Catalog Number: TA356409
 Formalin Fixed Paraffin Embedded Tissue:
 Human heart Tissue
 Observed Staining: Cytoplasmic
 Primary Antibody Concentration: 1:100
 Other Working Concentrations: N/A
 Secondary Antibody: Donkey anti-Rabbit-Cy3
 Secondary Antibody Concentration: 1:200
 Magnification: 20X
 Exposure Time: 0.5–2.0 sec