

Product datasheet for **TA356408**

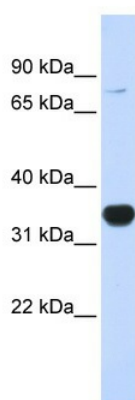
MIRO1 (RHOT1) Rabbit Polyclonal Antibody

Product data:

Product Type:	Primary Antibodies
Applications:	WB
Reactivity:	Human
Host:	Rabbit
Clonality:	Polyclonal
Immunogen:	The immunogen is a synthetic peptide directed towards the N terminal region of human RHOT1
Specificity:	Expected reactivity: Cow, Dog, Guinea Pig, Horse, Human, Mouse, Rabbit, Rat, Zebrafish Homology: Cow: 100%; Dog: 100%; Guinea Pig: 100%; Horse: 100%; Human: 100%; Mouse: 100%; Rabbit: 100%; Rat: 100%; Zebrafish: 85%
Formulation:	Liquid. Purified antibody supplied in 1x PBS buffer with 0.09% (w/v) sodium azide and 2% sucrose.
Concentration:	lot specific
Purification:	Affinity Purified
Conjugation:	Unconjugated
Storage:	For short term use, store at 2-8°C up to 1 week. For long term storage, store at -20°C in small aliquots to prevent freeze-thaw cycles.
Stability:	Shelf life: one year from despatch.
Predicted Protein Size:	75kDa
Gene Name:	ras homolog family member T1
Database Link:	NP_001028738 Entrez Gene 55288 Human Q8IXI2
Background:	RHOT1 is mitochondrial GTPase involved in mitochondrial trafficking. It is probably involved in control of anterograde transport of mitochondria and their subcellular distribution.
Synonyms:	ARHT1; FLJ11040; FLJ12633; hMiro-1; MIRO-1
Protein Families:	Transmembrane



[View online »](#)

Product images:

WB Suggested Anti-RHOT1 Antibody Titration:
0.2-1 ug/ml
ELISA Titer: 1:312500
Positive Control: 293T cell lysate RHOT1 is
strongly supported by BioGPS gene expression
data to be expressed in Human HEK293T cells