

## Product datasheet for **TA356403**

### LRRC66 Rabbit Polyclonal Antibody

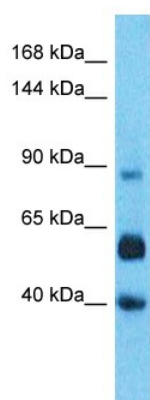
#### Product data:

Product Type:	Primary Antibodies
Applications:	WB
Reactivity:	Human
Host:	Rabbit
Clonality:	Polyclonal
Immunogen:	The immunogen is a synthetic peptide directed towards the C-terminal region of Human LRC66
Specificity:	<b>Expected reactivity:</b> Human <b>Homology:</b> Human: 100%
Formulation:	Liquid. Purified antibody supplied in 1x PBS buffer with 0.09% (w/v) sodium azide and 2% sucrose.
Concentration:	lot specific
Purification:	Affinity Purified
Conjugation:	Unconjugated
Storage:	For short term use, store at 2-8°C up to 1 week. For long term storage, store at -20°C in small aliquots to prevent freeze-thaw cycles.
Stability:	Shelf life: one year from despatch.
Predicted Protein Size:	96kDa
Gene Name:	leucine rich repeat containing 66
Database Link:	<a href="#">XP_005265796</a> <a href="#">Entrez Gene 339977 Human</a> <a href="#">Q68CR7</a>
Background:	This gene encodes a protein belonging to the leucine-rich repeat family of proteins, which are involved in diverse biological processes, including cell adhesion, cellular trafficking, and hormone-receptor interactions.
Synonyms:	Lrrc66



[View online »](#)

## Product images:



Host: Rabbit  
Target Name: LRC66  
Sample Tissue: Liver Tumor Lysate  
Antibody Dilution: 1.0µg/ml

Host: Rabbit  
Target Name: LRC66  
Sample Type: Liver Tumor lysates  
Antibody Dilution: 1.0ug/ml