

## Product datasheet for **TA356400**

### **AAacl4fm3 Rabbit Polyclonal Antibody**

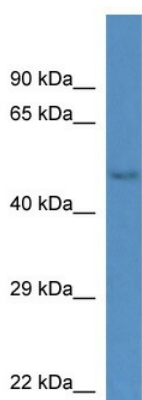
#### **Product data:**

Product Type:	Primary Antibodies
Applications:	WB
Reactivity:	Mouse
Host:	Rabbit
Clonality:	Polyclonal
Immunogen:	The immunogen is a synthetic peptide corresponding to a region of Mouse
Specificity:	<b>Expected reactivity:</b> Cow, Dog, Guinea Pig, Horse, Human, Mouse, Pig, Rabbit, Rat <b>Homology:</b> Cow: 100%; Dog: 92%; Guinea Pig: 92%; Horse: 85%; Human: 100%; Mouse: 86%; Pig: 93%; Rabbit: 86%; Rat: 92%
Formulation:	Liquid. Purified antibody supplied in 1x PBS buffer with 0.09% (w/v) sodium azide and 2% sucrose.
Concentration:	lot specific
Purification:	Affinity Purified
Conjugation:	Unconjugated
Storage:	For short term use, store at 2-8°C up to 1 week. For long term storage, store at -20°C in small aliquots to prevent freeze-thaw cycles.
Stability:	Shelf life: one year from despatch.
Predicted Protein Size:	46kDa
Gene Name:	predicted gene 13178
Database Link:	<a href="#">NP_001079005</a> <a href="#">Entrez Gene 546849 Mouse</a> <a href="#">B1AVU7</a>
Background:	The function of this protein remains unknown.
Synonyms:	Gm437; OTTMUSG00000010750



[View online »](#)

Product images:



WB Suggested Anti-Gm13178 Antibody  
Titration: 1.0 ug/ml  
Positive Control: Mouse Kidney