

## Product datasheet for **TA356399**

### AGPAT2 Rabbit Polyclonal Antibody

#### Product data:

Product Type:	Primary Antibodies
Applications:	IHC, WB
Reactivity:	Human
Host:	Rabbit
Clonality:	Polyclonal
Specificity:	<b>Expected reactivity:</b> Cow, Dog, Horse, Human, Yeast <b>Homology:</b> Cow: 85%; Dog: 92%; Horse: 77%; Human: 100%; Yeast: 91%
Formulation:	Liquid. Purified antibody supplied in 1x PBS buffer with 0.09% (w/v) sodium azide and 2% sucrose. <i>Note that this product is shipped as lyophilized powder to China customers.</i>
Concentration:	lot specific
Purification:	Affinity Purified
Conjugation:	Unconjugated
Storage:	For short term use, store at 2-8°C up to 1 week. For long term storage, store at -20°C in small aliquots to prevent freeze-thaw cycles.
Stability:	Shelf life: one year from despatch.
Predicted Protein Size:	31kDa
Gene Name:	1-acylglycerol-3-phosphate O-acyltransferase 2
Database Link:	<a href="#">NP_006403</a> <a href="#">Entrez Gene 10555 Human</a> <a href="#">O15120</a>
Background:	AGPAT2 is a member of the 1-acylglycerol-3-phosphate O-acyltransferase family. The protein is located within the endoplasmic reticulum membrane and converts lysophosphatidic acid to phosphatidic acid, the second step in de novo phospholipid biosynthesis. Mutations in its gene have been associated with congenital generalized lipodystrophy (CGL), or Berardinelli-Seip syndrome, a disease characterized by a near absence of adipose tissue and severe insulin resistance.
Synonyms:	1-AGPAT2; BSCL; BSCL1; LPAAB; LPAAT-beta



[View online »](#)

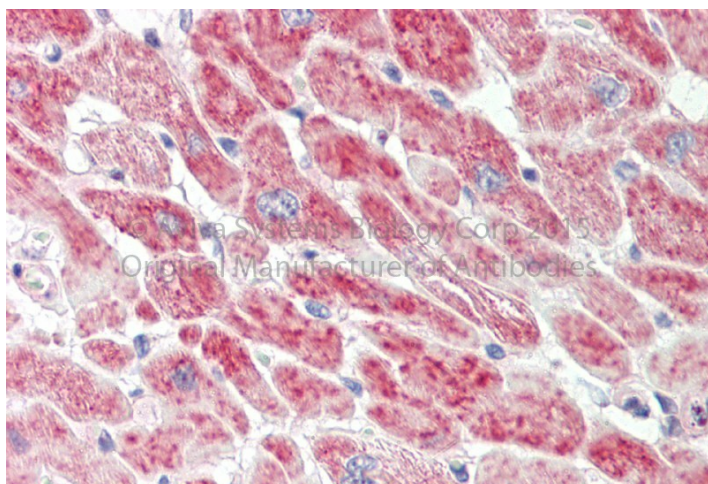
Protein Families: Transmembrane

Protein Pathways: Ether lipid metabolism, Glycerolipid metabolism, Glycerophospholipid metabolism, Metabolic pathways

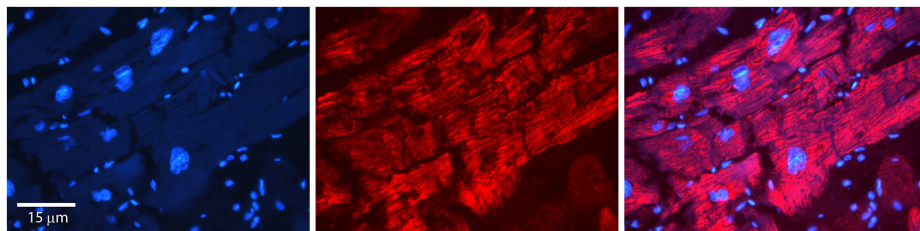
### Product images:



WB Suggested Anti-AGPAT2 Antibody  
Titration: 1.0 ug/ml  
Positive Control: 721\_B Whole Cell



Rabbit Anti-AGPAT2 antibody  
Catalog Number: ARP44636  
Formalin Fixed Paraffin Embedded Tissue:  
Human Adult Heart  
Observed Staining: Cytoplasm in hepatocytes  
Primary Antibody Concentration: 1:600  
Secondary Antibody: Donkey anti-Rabbit-Cy3  
Secondary Antibody Concentration: 1:200  
Magnification: 20X  
Exposure Time: 0.5-2.0 sec



Rabbit Anti-AGPAT2 Antibody  
Catalog Number: TA356399  
Formalin Fixed Paraffin Embedded Tissue:  
Human heart Tissue  
Observed Staining: Cytoplasmic  
Primary Antibody Concentration: N/A  
Other Working Concentrations: 1:600  
Secondary Antibody: Donkey anti-Rabbit-Cy3  
Secondary Antibody Concentration: 1:200  
Magnification: 20X  
Exposure Time: 0.5–2.0 sec