

Product datasheet for **TA356396**

ATP7B Rabbit Polyclonal Antibody

Product data:

Product Type:	Primary Antibodies
Applications:	WB
Reactivity:	Human
Host:	Rabbit
Clonality:	Polyclonal
Immunogen:	The immunogen is a synthetic peptide directed towards the middle region of human ATP7B
Specificity:	Expected reactivity: Dog, Guinea Pig, Horse, Human, Mouse, Rabbit, Rat Homology: Dog: 82%; Guinea Pig: 82%; Horse: 82%; Human: 100%; Mouse: 91%; Rabbit: 92%; Rat: 91%
Formulation:	Liquid. Purified antibody supplied in 1x PBS buffer with 0.09% (w/v) sodium azide and 2% sucrose. <i>Note that this product is shipped as lyophilized powder to China customers.</i>
Concentration:	lot specific
Purification:	Affinity Purified
Conjugation:	Unconjugated
Storage:	For short term use, store at 2-8°C up to 1 week. For long term storage, store at -20°C in small aliquots to prevent freeze-thaw cycles.
Stability:	Shelf life: one year from despatch.
Predicted Protein Size:	74kDa
Gene Name:	ATPase copper transporting beta
Database Link:	NP_000044.2 Entrez Gene 540 Human P35670



[View online »](#)

Background:

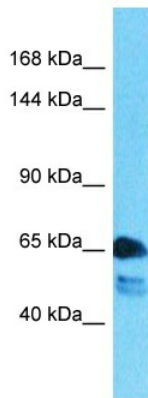
This gene is a member of the P-type cation transport ATPase family and encodes a protein with several membrane-spanning domains, an ATPase consensus sequence, a hinge domain, a phosphorylation site, and at least 2 putative copper-binding sites. This protein functions as a monomer, exporting copper out of the cells, such as the efflux of hepatic copper into the bile. Alternate transcriptional splice variants, encoding different isoforms with distinct cellular localizations, have been characterized. Mutations in this gene have been associated with Wilson disease (WD).

Synonyms:

PWD; WC1; WD; WND

Protein Families:

Druggable Genome, Transmembrane

Product images:

Host: Rabbit
Target Name: ATP7B
Sample Tissue: Lung Tumor Lysate
Antibody Dilution: 1.0µg/ml

Host: Rabbit
Target Name: ATP7B
Sample Type: Lung Tumor lysates
Antibody Dilution: 1.0ug/ml