

Product datasheet for **TA356393**

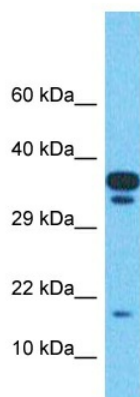
TMEM220 Rabbit Polyclonal Antibody

Product data:

Product Type:	Primary Antibodies
Applications:	WB
Reactivity:	Human
Host:	Rabbit
Clonality:	Polyclonal
Immunogen:	The immunogen is a synthetic peptide directed towards the middle region of Human TMEM220
Specificity:	Expected reactivity: Cow, Dog, Guinea Pig, Horse, Human, Mouse, Rabbit, Rat Homology: Cow: 91%; Dog: 100%; Guinea Pig: 86%; Horse: 92%; Human: 100%; Mouse: 82%; Rabbit: 100%; Rat: 83%
Formulation:	Liquid. Purified antibody supplied in 1x PBS buffer with 0.09% (w/v) sodium azide and 2% sucrose.
Concentration:	lot specific
Purification:	Affinity Purified
Conjugation:	Unconjugated
Storage:	For short term use, store at 2-8°C up to 1 week. For long term storage, store at -20°C in small aliquots to prevent freeze-thaw cycles.
Stability:	Shelf life: one year from despatch.
Predicted Protein Size:	17kDa
Gene Name:	transmembrane protein 220
Database Link:	Entrez Gene 388335 Human Q6QAJ8
Background:	The function of this protein remains unknown.
Synonyms:	TMEM220



[View online »](#)

Product images:


Host: Rabbit
Target Name: TMEM220
Sample Tissue: Uterus Tumor Lysate
Antibody Dilution: 1.0µg/ml

Host: Rabbit
Target Name: TMEM220
Sample Type: Uterus Tumor lysates
Antibody Dilution: 1.0ug/ml