

Product datasheet for TA356392

GPM6B Rabbit Polyclonal Antibody

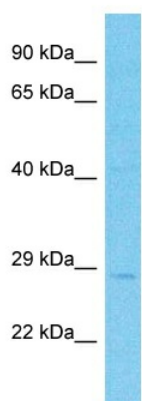
Product data:

Product Type:	Primary Antibodies
Applications:	WB
Reactivity:	Human
Host:	Rabbit
Clonality:	Polyclonal
Immunogen:	The immunogen is a synthetic peptide directed towards the N-terminal region of Human GPM6B
Specificity:	Expected reactivity: Cow, Dog, Guinea Pig, Horse, Human, Mouse, Rat Homology: Cow: 100%; Dog: 100%; Guinea Pig: 100%; Horse: 100%; Human: 100%; Mouse: 100%; Rat: 100%
Formulation:	Liquid. Purified antibody supplied in 1x PBS buffer with 0.09% (w/v) sodium azide and 2% sucrose. <i>Note that this product is shipped as lyophilized powder to China customers.</i>
Concentration:	lot specific
Purification:	Affinity purified
Conjugation:	Unconjugated
Storage:	For short term use, store at 2-8°C up to 1 week. For long term storage, store at -20°C in small aliquots to prevent freeze-thaw cycles.
Stability:	Shelf life: one year from despatch.
Predicted Protein Size:	29kDa
Gene Name:	glycoprotein M6B
Database Link:	NP_005269 Entrez Gene 2824 Human Q13491
Background:	This gene encodes a membrane glycoprotein that belongs to the proteolipid protein family. Proteolipid protein family members are expressed in most brain regions and are thought to be involved in cellular housekeeping functions, such as membrane trafficking and cell-to-cell communication.



[View online »](#)

Synonyms: M6B

Product images:

Host: Rabbit
Target Name: GPM6B
Sample Tissue: COLO205 Cell Lysate
Antibody Dilution: 1.0µg/ml

Host: Rabbit
Target Name: GPM6B
Sample Type: COLO205 Whole Cell lysates
Antibody Dilution: 1.0ug/ml