

## Product datasheet for **TA356391**

### beta 1 Sodium Potassium ATPase (ATP1B1) Rabbit Polyclonal Antibody

#### Product data:

Product Type:	Primary Antibodies
Applications:	IHC, WB
Reactivity:	Human
Host:	Rabbit
Clonality:	Polyclonal
Immunogen:	The immunogen is a synthetic peptide directed towards the C-terminal region of Human ATP1B1
Specificity:	<b>Expected reactivity:</b> Cow, Dog, Guinea Pig, Horse, Human, Mouse, Rabbit, Rat, Sheep, Zebrafish <b>Homology:</b> Cow: 100%; Dog: 100%; Guinea Pig: 100%; Horse: 93%; Human: 100%; Mouse: 100%; Rabbit: 100%; Rat: 100%; Sheep: 100%; Zebrafish: 86%
Formulation:	Liquid. Purified antibody supplied in 1x PBS buffer with 0.09% (w/v) sodium azide and 2% sucrose. <i>Note that this product is shipped as lyophilized powder to China customers.</i>
Concentration:	lot specific
Purification:	Affinity Purified
Conjugation:	Unconjugated
Storage:	For short term use, store at 2-8°C up to 1 week. For long term storage, store at -20°C in small aliquots to prevent freeze-thaw cycles.
Stability:	Shelf life: one year from despatch.
Predicted Protein Size:	33kDa
Gene Name:	ATPase Na <sup>+</sup> /K <sup>+</sup> transporting subunit beta 1
Database Link:	<a href="#">Entrez Gene 481 Human P05026-2</a>



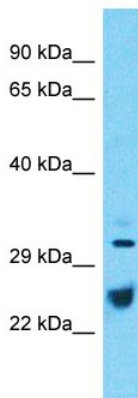
[View online »](#)

**Background:**

The protein encoded by this gene belongs to the family of Na<sup>+</sup>/K<sup>+</sup> and H<sup>+</sup>/K<sup>+</sup> ATPases beta chain proteins, and to the subfamily of Na<sup>+</sup>/K<sup>+</sup> -ATPases. Na<sup>+</sup>/K<sup>+</sup> -ATPase is an integral membrane protein responsible for establishing and maintaining the electrochemical gradients of Na and K ions across the plasma membrane. These gradients are essential for osmoregulation, for sodium-coupled transport of a variety of organic and inorganic molecules, and for electrical excitability of nerve and muscle. This enzyme is composed of two subunits, a large catalytic subunit (alpha) and a smaller glycoprotein subunit (beta). The beta subunit regulates, through assembly of alpha/beta heterodimers, the number of sodium pumps transported to the plasma membrane. The glycoprotein subunit of Na<sup>+</sup>/K<sup>+</sup> -ATPase is encoded by multiple genes. This gene encodes a beta 1 subunit.

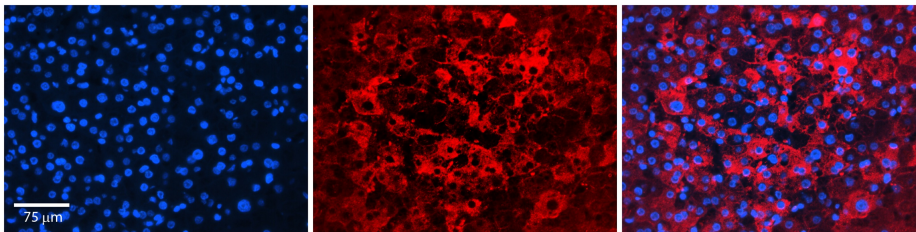
**Synonyms:**

adenosinetriphosphatase; ATP1B; MGC1798; OTTHUMP00000032538

**Product images:**


Host: Rabbit  
 Target Name: ATP1B1  
 Sample Tissue: Thymus Tumor Lysate  
 Antibody Dilution: 1.0µg/ml

Host: Rabbit  
 Target Name: ATP1B1  
 Sample Type: Thymus Tumor lysates  
 Antibody Dilution: 1.0ug/ml



Rabbit Anti-ATP1B1 Antibody  
 Catalog Number: TA356391  
 Formalin Fixed Paraffin Embedded Tissue:  
 Human Liver Tissue  
 Observed Staining: Plasma membrane and  
 cytoplasm in hepatocytes  
 Primary Antibody Concentration: 1:100  
 Other Working Concentrations: N/A  
 Secondary Antibody: Donkey anti-Rabbit-Cy3  
 Secondary Antibody Concentration: 1:200  
 Magnification: 20X  
 Exposure Time: 0.5–2.0 sec