

Product datasheet for **TA356385**

GAA Rabbit Polyclonal Antibody

Product data:

Product Type:	Primary Antibodies
Applications:	WB
Reactivity:	Human
Host:	Rabbit
Clonality:	Polyclonal
Immunogen:	The immunogen is a synthetic peptide directed towards the N terminal region of human GAA
Specificity:	Expected reactivity: Human Homology: Dog: 86%; Guinea Pig: 100%; Horse: 86%; Human: 100%; Mouse: 100%; Rabbit: 100%; Rat: 100%
Formulation:	Liquid. Purified antibody supplied in 1x PBS buffer with 0.09% (w/v) sodium azide and 2% sucrose. <i>Note that this product is shipped as lyophilized powder to China customers.</i>
Concentration:	lot specific
Purification:	Affinity purified
Conjugation:	Unconjugated
Storage:	For short term use, store at 2-8°C up to 1 week. For long term storage, store at -20°C in small aliquots to prevent freeze-thaw cycles.
Stability:	Shelf life: one year from despatch.
Predicted Protein Size:	104 kDa
Gene Name:	glucosidase alpha, acid
Database Link:	NP_000143 Entrez Gene 2548 Human P10253



[View online »](#)

Background:

This gene encodes lysosomal alpha-glucosidase, which is essential for the degradation of glycogen to glucose in lysosomes. The encoded preproprotein is proteolytically processed to generate multiple intermediate forms and the mature form of the enzyme. Defects in this gene are the cause of glycogen storage disease II, also known as Pompe's disease, which is an autosomal recessive disorder with a broad clinical spectrum. Alternative splicing results in multiple transcript variants.

Synonyms:

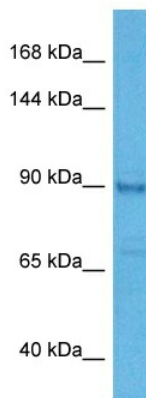
LYAG

Protein Families:

Druggable Genome, Transmembrane

Protein Pathways:

Galactose metabolism, Lysosome, Metabolic pathways, Starch and sucrose metabolism

Product images:

Host: Rabbit
Target Name: TPO
Sample Type: PANC1 Cell Lysate
Antibody Dilution: 1.0µg/ml

Host: Rabbit
Target Name: TPO
Sample Tissue: Human PANC1 Whole Cell lysates
Antibody Dilution: 2ug/ml