

Product datasheet for **TA356380**

SLC25A35 Rabbit Polyclonal Antibody

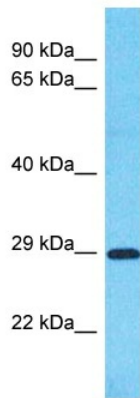
Product data:

Product Type:	Primary Antibodies
Applications:	WB
Reactivity:	Human
Host:	Rabbit
Clonality:	Polyclonal
Immunogen:	The immunogen is a synthetic peptide directed towards the middle region of Human SLC25A35
Specificity:	Expected reactivity: Cow, Dog, Guinea Pig, Horse, Human, Mouse, Pig, Rabbit, Rat, Zebrafish Homology: Cow: 86%; Dog: 100%; Guinea Pig: 93%; Horse: 100%; Human: 100%; Mouse: 100%; Pig: 100%; Rabbit: 100%; Rat: 100%; Zebrafish: 91%
Formulation:	Liquid. Purified antibody supplied in 1x PBS buffer with 0.09% (w/v) sodium azide and 2% sucrose.
Concentration:	lot specific
Purification:	Affinity Purified
Conjugation:	Unconjugated
Storage:	For short term use, store at 2-8°C up to 1 week. For long term storage, store at -20°C in small aliquots to prevent freeze-thaw cycles.
Stability:	Shelf life: one year from despatch.
Predicted Protein Size:	33kDa
Gene Name:	solute carrier family 25 member 35
Database Link:	XP_005256696 Entrez Gene 399512 Human Q3KQZ1
Background:	SLC25A35 belongs to the SLC25 family of mitochondrial carrier proteins.
Synonyms:	FLJ40217; MGC120446; MGC120448



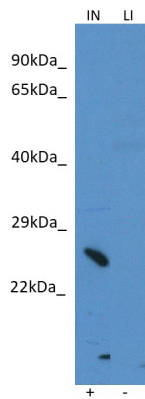
[View online »](#)

Product images:



Host: Rabbit
Target Name: SLC25A35
Sample Tissue: Stomach Tumor Lysate
Antibody Dilution: 1.0µg/ml

Host: Rabbit
Target Name: SLC25A35
Sample Type: Stomach Tumor lysates
Antibody Dilution: 1.0ug/ml



Host: Rabbit
Target Name: SLC25A35
Positive Control: ~25ug Mouse Intestine (IN)
Negative Control: ~25ug Rat Liver (LI)
Antibody Concentration: 1ug/ml

Host: Rabbit
Target: SLC25A35
Positive control (+): Mouse Small Intesine (M-IN)
Negative control (-): Rat Liver (R-LI)
Antibody concentration: 1ug/ml