

## Product datasheet for **TA356379**

### SLC13A5 Rabbit Polyclonal Antibody

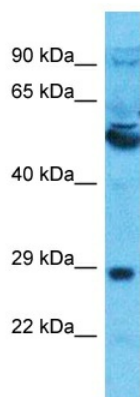
#### Product data:

Product Type:	Primary Antibodies
Applications:	WB
Reactivity:	Human
Host:	Rabbit
Clonality:	Polyclonal
Immunogen:	The immunogen is a synthetic peptide directed towards the middle region of Human SLC13A5
Specificity:	<b>Expected reactivity:</b> Cow, Dog, Guinea Pig, Horse, Human, Mouse, Rabbit, Rat <b>Homology:</b> Cow: 92%; Dog: 85%; Guinea Pig: 100%; Horse: 85%; Human: 100%; Mouse: 77%; Rabbit: 100%; Rat: 93%
Formulation:	Liquid. Purified antibody supplied in 1x PBS buffer with 0.09% (w/v) sodium azide and 2% sucrose.
Concentration:	lot specific
Purification:	Affinity Purified
Conjugation:	Unconjugated
Storage:	For short term use, store at 2-8°C up to 1 week. For long term storage, store at -20°C in small aliquots to prevent freeze-thaw cycles.
Stability:	Shelf life: one year from despatch.
Predicted Protein Size:	57kDa
Gene Name:	solute carrier family 13 member 5
Database Link:	<a href="#">Entrez Gene 284111 Human Q86YT5-2</a>
Background:	SLC13A5 is a tricarboxylate plasma transporter with a preference for citrate.
Synonyms:	DKFZp686E17257; MGC138356; NACT



[View online »](#)

## Product images:



Host: Rabbit  
Target Name: SLC13A5  
Sample Tissue: Thymus Tumor Lysate  
Antibody Dilution: 1.0 $\mu$ g/ml

Host: Rabbit  
Target Name: SLC13A5  
Sample Type: Thymus Tumor lysates  
Antibody Dilution: 1.0ug/ml