

## Product datasheet for **TA356376**

### VGLuT1 (SLC17A7) Rabbit Polyclonal Antibody

#### Product data:

Product Type:	Primary Antibodies
Applications:	WB
Reactivity:	Human
Host:	Rabbit
Clonality:	Polyclonal
Immunogen:	The immunogen is a synthetic peptide directed towards the N-terminal region of Human VGLU1
Specificity:	<b>Expected reactivity:</b> Cow, Dog, Guinea Pig, Horse, Human, Mouse, Rabbit, Rat <b>Homology:</b> Cow: 93%; Dog: 100%; Guinea Pig: 100%; Horse: 100%; Human: 100%; Mouse: 100%; Rabbit: 100%; Rat: 100%
Formulation:	Liquid. Purified antibody supplied in 1x PBS buffer with 0.09% (w/v) sodium azide and 2% sucrose. <i>Note that this product is shipped as lyophilized powder to China customers.</i>
Concentration:	lot specific
Purification:	Affinity Purified
Conjugation:	Unconjugated
Storage:	For short term use, store at 2-8°C up to 1 week. For long term storage, store at -20°C in small aliquots to prevent freeze-thaw cycles.
Stability:	Shelf life: one year from despatch.
Predicted Protein Size:	61kDa
Gene Name:	solute carrier family 17 member 7
Database Link:	<a href="#">NP_064705</a> <a href="#">Entrez Gene 57030 Human</a> <a href="#">Q9P2U7</a>



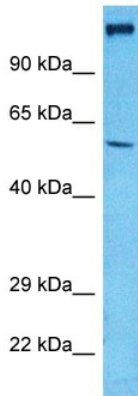
[View online »](#)

**Background:**

The protein encoded by this gene is a vesicle-bound, sodium-dependent phosphate transporter that is specifically expressed in the neuron-rich regions of the brain. It is preferentially associated with the membranes of synaptic vesicles and functions in glutamate transport. The protein shares 82% identity with the differentiation-associated Na-dependent inorganic phosphate cotransporter and they appear to form a distinct class within the Na<sup>+</sup>/Pi cotransporter family.

**Synonyms:**

BNPI; VGLUT1

**Product images:**

Host: Rabbit  
Target Name: VGLU1  
Sample Tissue: HepG2 Cell Lysate  
Antibody Dilution: 1.0µg/ml

Host: Rabbit  
Target Name: VGLU1  
Sample Type: HepG2 Whole Cell lysates  
Antibody Dilution: 1ug/ml