

Product datasheet for **TA356375**

SLC39A10 Rabbit Polyclonal Antibody

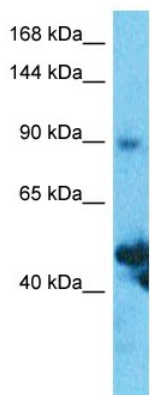
Product data:

Product Type:	Primary Antibodies
Applications:	WB
Reactivity:	Human
Host:	Rabbit
Clonality:	Polyclonal
Immunogen:	The immunogen is a synthetic peptide directed towards the N-terminal region of Human SLC39A10
Specificity:	Expected reactivity: Cow, Guinea Pig, Horse, Human, Mouse, Rabbit, Rat Homology: Cow: 100%; Guinea Pig: 79%; Horse: 100%; Human: 100%; Mouse: 100%; Rabbit: 100%; Rat: 100%
Formulation:	Liquid. Purified antibody supplied in 1x PBS buffer with 0.09% (w/v) sodium azide and 2% sucrose. <i>Note that this product is shipped as lyophilized powder to China customers.</i>
Concentration:	lot specific
Purification:	Affinity Purified
Conjugation:	Unconjugated
Storage:	For short term use, store at 2-8°C up to 1 week. For long term storage, store at -20°C in small aliquots to prevent freeze-thaw cycles.
Stability:	Shelf life: one year from despatch.
Predicted Protein Size:	91kDa
Gene Name:	solute carrier family 39 member 10
Database Link:	NP_065075 Entrez Gene 57181 Human Q9ULF5
Background:	Zinc is an essential cofactor for hundreds of enzymes. It is involved in protein, nucleic acid, carbohydrate, and lipid metabolism, as well as in the control of gene transcription, growth, development, and differentiation. SLC39A10 belongs to a subfamily of proteins that show structural characteristics of zinc transporters.



[View online »](#)

Synonyms: DKFZp564L2123; DKFZp781L10106; FLJ90515; KIAA1265; LZT-Hs2; MGC126565; MGC138428; ZIP-10; ZIP10

Product images:

Host: Rabbit
Target Name: SLC39A10
Sample Tissue: Thymus Tumor Lysate
Antibody Dilution: 1.0µg/ml

Host: Rabbit
Target Name: SLC39A10
Sample Type: Thymus Tumor lysates
Antibody Dilution: 1.0ug/ml