

Product datasheet for **TA356374**

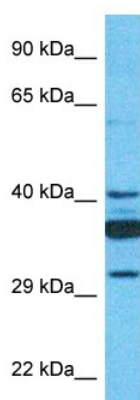
SLC35C1 Rabbit Polyclonal Antibody

Product data:

Product Type:	Primary Antibodies
Applications:	WB
Reactivity:	Human
Host:	Rabbit
Clonality:	Polyclonal
Immunogen:	The immunogen is a synthetic peptide directed towards the C-terminal region of Human SLC35C1
Specificity:	Expected reactivity: Horse, Human, Rabbit, Rat Homology: Horse: 79%; Human: 100%; Rabbit: 79%; Rat: 100%
Formulation:	Liquid. Purified antibody supplied in 1x PBS buffer with 0.09% (w/v) sodium azide and 2% sucrose.
Concentration:	lot specific
Purification:	Affinity Purified
Conjugation:	Unconjugated
Storage:	For short term use, store at 2-8°C up to 1 week. For long term storage, store at -20°C in small aliquots to prevent freeze-thaw cycles.
Stability:	Shelf life: one year from despatch.
Predicted Protein Size:	40kDa
Gene Name:	solute carrier family 35 member C1
Database Link:	Entrez Gene 55343 Human Q96A29
Background:	This gene encodes a GDP-fucose transporter that is found in the Golgi apparatus. Mutations in this gene result in congenital disorder of glycosylation type IIc. Multiple transcript variants encoding different isoforms have been found for this gene.
Synonyms:	FLJ11320; FLJ14841; FUCT1



[View online »](#)

Product images:

Host: Rabbit
Target Name: SLC35C1
Sample Tissue: 721_B Cell Lysate
Antibody Dilution: 1.0 μ g/ml

Host: Rabbit
Target Name: SLC35C1
Sample Type: 721_B Whole Cell lysates
Antibody Dilution: 1.0ug/ml